

Product datasheet for **TA347333**

Mps1 (TTK) Rabbit Polyclonal Antibody

Product data:

Product Type:	Primary Antibodies
Applications:	WB
Recommended Dilution:	WB: 1:500-1:3000
Reactivity:	Human, Mouse
Host:	Rabbit
Isotype:	IgG
Clonality:	Polyclonal
Immunogen:	The immunogen for anti-TTK Antibody: A synthesized peptide derived from human TTK
Formulation:	Rabbit IgG in phosphate buffered saline , pH 7.4, 150mM NaCl, 0.02% sodium azide and 50% glycerol. Store at -20?. Stable for 12 months from date of receipt
Concentration:	lot specific
Purification:	Affinity-chromatography
Conjugation:	Unconjugated
Storage:	Store at -20°C as received.
Stability:	Stable for 12 months from date of receipt.
Predicted Protein Size:	100 kDa
Gene Name:	TTK protein kinase
Database Link:	NP_003309 Entrez Gene 22137 Mouse Entrez Gene 7272 Human P33981
Background:	TTK a dual-specificity protein kinase orthologous to the yeast monopolar spindle (Mps1) kinase that is required for spindle pole duplication and the spindle checkpoint but not for centrosome duplication. Localized to centrosomes, kinetochores and nuclear pores. Its enzymatic activity is required for the recruitment of Mad1, Mad2, Bub1 and Bub3 to the kinetochore.
Synonyms:	CT96; ESK; MPH1; MPS1; MPS1L1; PYT
Note:	TTK antibody detects endogenous levels of total TTK

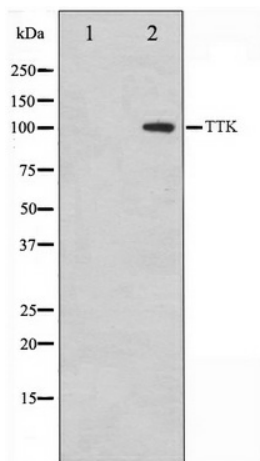


[View online »](#)

Protein Families: Druggable Genome, Protein Kinase

Protein Pathways: Cell cycle, Oocyte meiosis, TGF-beta signaling pathway, Ubiquitin mediated proteolysis, Wnt signaling pathway

Product images:



Western blot analysis on HuvEc cell lysate using TTK Antibody