

Product datasheet for **TA347332**

HSF1 Rabbit Polyclonal Antibody

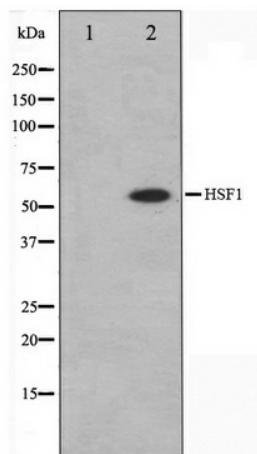
Product data:

Product Type:	Primary Antibodies
Applications:	WB
Recommended Dilution:	WB: 1:500-1:3000
Reactivity:	Human, Mouse
Host:	Rabbit
Isotype:	IgG
Clonality:	Polyclonal
Immunogen:	The immunogen for anti-HSF1 Antibody: A synthesized peptide derived from human HSF1
Formulation:	Rabbit IgG in phosphate buffered saline , pH 7.4, 150mM NaCl, 0.02% sodium azide and 50% glycerol. Store at -20?. Stable for 12 months from date of receipt
Concentration:	lot specific
Purification:	Affinity-chromatography
Conjugation:	Unconjugated
Storage:	Store at -20°C as received.
Stability:	Stable for 12 months from date of receipt.
Predicted Protein Size:	55 kDa
Gene Name:	heat shock transcription factor 1
Database Link:	NP_005517 Entrez Gene 15499 Mouse Entrez Gene 3297 Human Q00613
Background:	HSF1 a heat-shock transcription factor. Transcription of heat-shock genes is rapidly induced after temperature stress. Hsp90, by itself and/or associated with multichaperone complexes, is a major repressor of HSF1. Two alternatively spliced isoforms have been described.
Synonyms:	HSTF1
Note:	HSF1 antibody detects endogenous levels of total HSF1
Protein Families:	Transcription Factors



[View online »](#)

Product images:



Western blot analysis on Jurkat cell lysate using HSF1 Antibody