

## Product datasheet for **TA347328**

### IL2 Receptor beta (IL2RB) Rabbit Polyclonal Antibody

#### Product data:

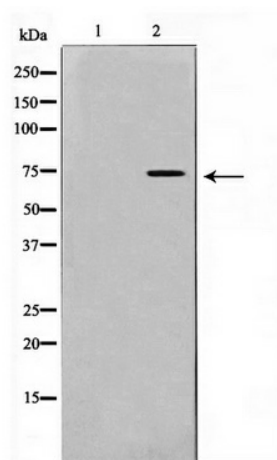
Product Type:	Primary Antibodies
Applications:	WB
Recommended Dilution:	WB: 1:500-1:3000
Reactivity:	Human, Mouse, Rat
Host:	Rabbit
Isotype:	IgG
Clonality:	Polyclonal
Immunogen:	The immunogen for anti-IL-2Rbeta/CD122 Antibody: A synthesized peptide derived from human IL-2Rbeta/CD122
Formulation:	Rabbit IgG in phosphate buffered saline , pH 7.4, 150mM NaCl, 0.02% sodium azide and 50% glycerol. Store at -20?. Stable for 12 months from date of receipt
Concentration:	lot specific
Purification:	Affinity-chromatography
Conjugation:	Unconjugated
Storage:	Store at -20°C as received.
Stability:	Stable for 12 months from date of receipt.
Predicted Protein Size:	75 kDa
Gene Name:	interleukin 2 receptor subunit beta
Database Link:	<a href="#">NP_000869</a> <a href="#">Entrez Gene 16185 Mouse</a> <a href="#">Entrez Gene 25746 Rat</a> <a href="#">Entrez Gene 3560 Human</a> <a href="#">P14784</a>
Background:	IL2RB Receptor for interleukin-2. This beta subunit is involved in receptor mediated endocytosis and transduces the mitogenic signals of IL2. Belongs to the type I cytokine receptor family. Type 4 subfamily. Non-covalent dimer of an alpha and a beta subunit.
Synonyms:	CD122; IL15RB; P70-75
Note:	IL-2Rbeta/CD122 antibody detects endogenous levels of total IL-2Rbeta/CD122
Protein Families:	Druggable Genome, Transmembrane



[View online »](#)

Protein Pathways: Cytokine-cytokine receptor interaction, Endocytosis, Jak-STAT signaling pathway

### Product images:



Western blot analysis on HeLa cell lysate using IL-2Rbeta/CD122 Antibody