

Product datasheet for TA347326

GNAZ Rabbit Polyclonal Antibody

Product data:

Product Type:	Primary Antibodies
Applications:	WB
Recommended Dilution:	WB: 1:500-1:3000
Reactivity:	Human, Mouse, Rat
Host:	Rabbit
Isotype:	IgG
Clonality:	Polyclonal
Immunogen:	The immunogen for anti-Gz-alpha Antibody: A synthesized peptide derived from human Gz-alpha
Formulation:	Rabbit IgG in phosphate buffered saline , pH 7.4, 150mM NaCl, 0.02% sodium azide and 50% glycerol. Store at -20?. Stable for 12 months from date of receipt
Concentration:	lot specific
Purification:	Affinity-chromatography
Conjugation:	Unconjugated
Storage:	Store at -20°C as received.
Stability:	Stable for 12 months from date of receipt.
Predicted Protein Size:	41 kDa
Gene Name:	G protein subunit alpha z
Database Link:	NP_002064 Entrez Gene 14687 Mouse Entrez Gene 25740 Rat Entrez Gene 2781 Human P19086
Background:	G-alpha(z) Guanine nucleotide-binding proteins (G proteins) are involved as modulators or transducers in various transmembrane signaling systems. G proteins are composed of 3 units; alpha, beta and gamma. The alpha chain contains the guanine nucleotide binding site. Belongs to the G-alpha family. G(i/o/t/z) subfamily. Note: This description may include information from UniProtKB.
Synonyms:	alpha z polypeptide; guanine nucleotide binding protein; guanine nucleotide binding protein (G protein); transducin alpha



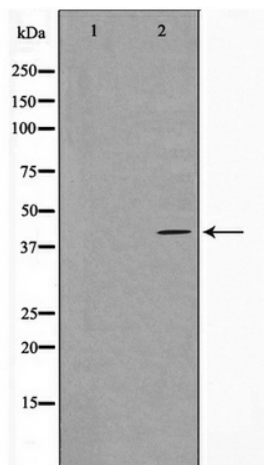
[View online »](#)

Note: Gz-alpha antibody detects endogenous levels of total Gz-alpha

Protein Families: Druggable Genome

Protein Pathways: Long-term depression

Product images:



Western blot analysis on COS7 cell lysate using Gz-alpha Antibody