

Product datasheet for **TA347324**

Cyclin H (CCNH) Rabbit Polyclonal Antibody

Product data:

Product Type:	Primary Antibodies
Applications:	WB
Recommended Dilution:	WB: 1:500-1:3000
Reactivity:	Human, Mouse, Rat
Host:	Rabbit
Isotype:	IgG
Clonality:	Polyclonal
Immunogen:	The immunogen for anti-Cyclin H Antibody: A synthesized peptide derived from human Cyclin H
Formulation:	Rabbit IgG in phosphate buffered saline , pH 7.4, 150mM NaCl, 0.02% sodium azide and 50% glycerol. Store at -20?. Stable for 12 months from date of receipt
Concentration:	lot specific
Purification:	Affinity-chromatography
Conjugation:	Unconjugated
Storage:	Store at -20°C as received.
Stability:	Stable for 12 months from date of receipt.
Predicted Protein Size:	36 kDa
Gene Name:	cyclin H
Database Link:	NP_001230 Entrez Gene 66671 Mouse Entrez Gene 84389 Rat Entrez Gene 902 Human P51946



[View online »](#)

Background:

CCNH Regulates CDK7, the catalytic subunit of the CDK- activating kinase (CAK) enzymatic complex. CAK activates the cyclin-associated kinases CDC2/CDK1, CDK2, CDK4 and CDK6 by threonine phosphorylation. CAK complexed to the core-TFIH basal transcription factor activates RNA polymerase II by serine phosphorylation of the repetitive C-terminus domain (CTD) of its large subunit (POLR2A), allowing its escape from the promoter and elongation of the transcripts. Involved in cell cycle control and in RNA transcription by RNA polymerase II. Its expression and activity are constant throughout the cell cycle. Belongs to the cyclin family. Cyclin C subfamily. Associates primarily with CDK7 and MAT1 to form the CAK complex. CAK can further associate with the core-TFIH to form the TFIH basal transcription facto

Synonyms:

CAK; Cych; p34; p37

Note:

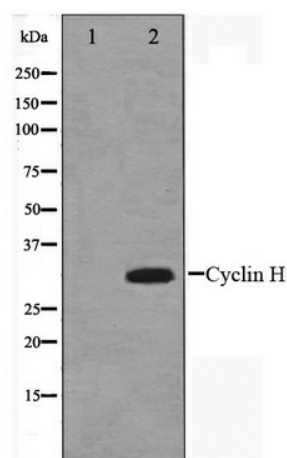
Cyclin H antibody detects endogenous levels of total Cyclin H

Protein Families:

Druggable Genome, Transcription Factors

Protein Pathways:

Cell cycle, Nucleotide excision repair

Product images:

Western blot analysis on HeLa cell lysate using Cyclin H Antibody