

Product datasheet for **TA347323**

CD226 Rabbit Polyclonal Antibody

Product data:

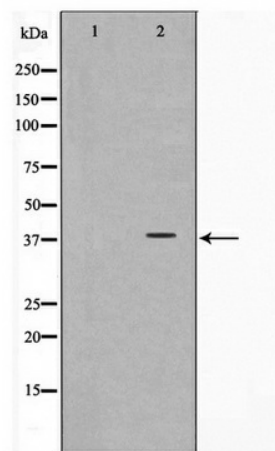
Product Type:	Primary Antibodies
Applications:	WB
Recommended Dilution:	WB: 1:500-1:3000
Reactivity:	Human, Mouse
Host:	Rabbit
Isotype:	IgG
Clonality:	Polyclonal
Immunogen:	The immunogen for anti-CD226/DNAM-1 Antibody: A synthesized peptide derived from human CD226/DNAM-1
Formulation:	Rabbit IgG in phosphate buffered saline , pH 7.4, 150mM NaCl, 0.02% sodium azide and 50% glycerol. Store at -20?. Stable for 12 months from date of receipt
Concentration:	lot specific
Purification:	Affinity-chromatography
Conjugation:	Unconjugated
Storage:	Store at -20°C as received.
Stability:	Stable for 12 months from date of receipt.
Predicted Protein Size:	38 kDa
Gene Name:	CD226 molecule
Database Link:	NP_006557 Entrez Gene 225825 Mouse Entrez Gene 10666 Human Q15762
Background:	DNAM-1 Receptor involved in intercellular adhesion, lymphocyte signaling, cytotoxicity and lymphokine secretion mediated by cytotoxic T-lymphocyte (CTL) and NK cell. Interacts with PVR and PVRL2.
Synonyms:	DNAM-1; DNAM1; PTA1; TLISA1
Note:	CD226/DNAM-1 antibody detects endogenous levels of total CD226/DNAM-1
Protein Families:	Druggable Genome, Transmembrane



[View online »](#)

Protein Pathways: Cell adhesion molecules (CAMs)

Product images:



Western blot analysis on COS7 cell lysate using CD226/DNAM-1 Antibody