

Product datasheet for **TA347322**

CEBPE Rabbit Polyclonal Antibody

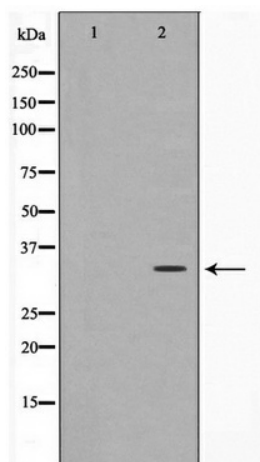
Product data:

Product Type:	Primary Antibodies
Applications:	WB
Recommended Dilution:	WB: 1:500-1:3000
Reactivity:	Human
Host:	Rabbit
Isotype:	IgG
Clonality:	Polyclonal
Immunogen:	The immunogen for anti-C/EBP-epsilon Antibody: A synthesized peptide derived from human C/EBP-epsilon
Formulation:	Rabbit IgG in phosphate buffered saline , pH 7.4, 150mM NaCl, 0.02% sodium azide and 50% glycerol. Store at -20?. Stable for 12 months from date of receipt
Concentration:	lot specific
Purification:	Affinity-chromatography
Conjugation:	Unconjugated
Storage:	Store at -20°C as received.
Stability:	Stable for 12 months from date of receipt.
Predicted Protein Size:	34 kDa
Gene Name:	CCAAT/enhancer binding protein epsilon
Database Link:	NP_001796 Entrez Gene 1053 Human Q15744
Background:	C/EBP-epsilon C/EBP are DNA-binding proteins that recognize two different motifs: the CCAAT homology common to many promoters and the enhanced core homology common to many enhancers. Belongs to the bZIP family. C/EBP subfamily.
Synonyms:	C; CRP1; EBP-epsilon
Note:	C/EBP-epsilon antibody detects endogenous levels of total C/EBP-epsilon
Protein Families:	Druggable Genome, Transcription Factors



[View online »](#)

Product images:



Western blot analysis on HuvEc cell lysate using
C/EBP-epsilon Antibody