

## Product datasheet for **TA347316**

### ZBTB38 Rabbit Polyclonal Antibody

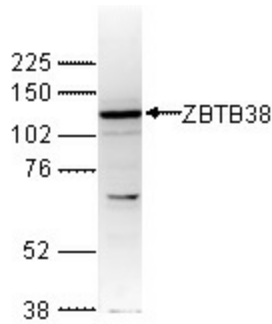
#### Product data:

Product Type:	Primary Antibodies
Applications:	ELISA, WB
Recommended Dilution:	ELISA (1:100 ?? 1:1,000) ; Western blotting (1:1,000)
Reactivity:	Human
Host:	Rabbit
Isotype:	IgG
Clonality:	Polyclonal
Immunogen:	The immunogen for anti-ZBTB38 antibody: human ZBTB38 (zinc finger and BTB domain containing 38), using three KLH-conjugated synthetic peptides, two containing a sequence from the central part and one containing a sequence from the C-terminal part of the p
Concentration:	lot specific
Purification:	Whole antiserum from rabbit containing 0.05% azide.
Conjugation:	Unconjugated
Storage:	Store at -20°C as received.
Stability:	Stable for 12 months from date of receipt.
Gene Name:	zinc finger and BTB domain containing 38
Database Link:	<a href="#">NP_001073881</a> <a href="#">Entrez Gene 253461 Human</a> <a href="#">Q8NAP3</a>
Background:	ZBTB38 (UniProt/Swiss-Prot entry Q8NAP3) is a methyl CpG binding protein that binds to DNA sequences containing a single methylated CpG, thereby acting as a transcriptional repressor. It has been found to be highly expressed in the brain and may be involved in the differentiation of late postmitotic neurons.
Synonyms:	CIBZ; PPP1R171; ZNF921

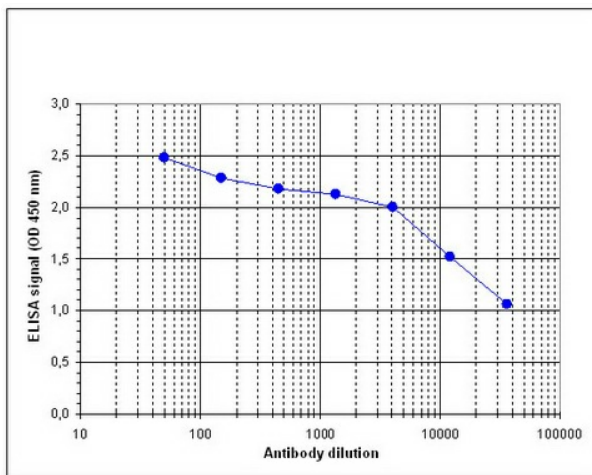


[View online »](#)

## Product images:



WB using the antibody against ZBTB38 diluted 1:1,000 in TBS-Tween containing 5% skimmed milk. The position of the protein of interest (expected size: 138 kDa) is indicated on the right; the marker (in kDa) is shown on the left.



Determination of the titer To determine the titer, an ELISA was performed using a serial dilution of the antibody against human ZBTB38. The plates were coated with the peptides used for immunization of the rabbit. By plotting the absorbance against the antibody dilution (Figure 1), the titer of the antibody was estimated to be 1:26,000.