

Product datasheet for **TA347313**

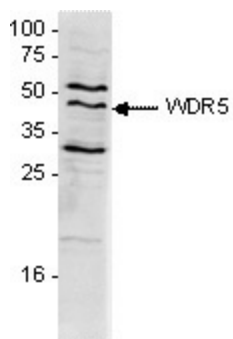
WDR5 Rabbit Polyclonal Antibody

Product data:

Product Type:	Primary Antibodies
Applications:	WB
Recommended Dilution:	Western blotting (1:1,000)
Reactivity:	Human
Host:	Rabbit
Isotype:	IgG
Clonality:	Polyclonal
Immunogen:	The immunogen for anti-WDR5 antibody: human WDR5 (WD (tryptophan-aspartate) repeat domain 5), using a recombinant protein.
Concentration:	lot specific
Purification:	Protein G purified polyclonal antibody in PBS containing 0.05% azide and 0.05% ProClin 300.
Conjugation:	Unconjugated
Storage:	Store at -20°C as received.
Stability:	Stable for 12 months from date of receipt.
Gene Name:	WD repeat domain 5
Database Link:	NP_060058 Entrez Gene 11091 Human P61964
Background:	WDR5 (UniProtKB/Swiss-Prot entry P61964) belongs to the family of WD repeat proteins which are involved in different cellular processes such as cell cycle progression, signal transduction, apoptosis, and gene regulation. It is a component of the Set1A and Set1B histone H3 methylation complexes. These complexes methylate lysine 4 of H3, thereby activating gene transcription. WDR5 interacts with H3 dimethyl K4, but not with tri or mono methylated H3K4.
Synonyms:	BIG-3; CFAP89; SWD3
Protein Families:	Druggable Genome



[View online »](#)

Product images:

WB using the antibody against WDR5 diluted of 1:1000 in TBS-Tween containing 5% skimmed milk (lane 2). The molecular weight marker (in kDa) is shown on the left; the location of the protein of interest is indicated on the right.