

Product datasheet for **TA347307**

p53 (TP53) Rabbit Polyclonal Antibody

Product data:

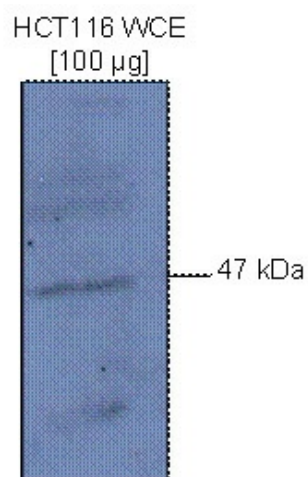
Product Type:	Primary Antibodies
Applications:	WB
Recommended Dilution:	Western blotting (1:200); ChIP (5 µg/ChIP)
Reactivity:	Human
Host:	Rabbit
Isotype:	IgG
Clonality:	Polyclonal
Immunogen:	The immunogen for anti-p53K372me1 antibody: human p53 (tumor protein p53), methylated at K372, using a KLH-conjugated synthetic peptide.
Concentration:	lot specific
Purification:	Protein G purified polyclonal antibody in PBS containing 0.05% azide and 0.05% ProClin 300.
Conjugation:	Unconjugated
Storage:	Store at -20°C as received.
Stability:	Stable for 12 months from date of receipt.
Gene Name:	tumor protein p53
Database Link:	NP_000537 Entrez Gene 7157 Human P04637
Background:	The transcription factor p53 (UniProt/Swiss-Prot entry P04637) is a tumour suppressor that regulates the cellular response to diverse cellular stresses. Upon activation, p53 induces several target genes which leads to cell cycle arrest and DNA repair, or alternatively, to apoptosis. In unstressed cells, p53 is kept inactive by the ubiquitin ligase MDM2 which inhibits the activity and promotes the degradation. p53 is a short-lived protein which is activated and stabilized via different post-translational modifications. One of these modifications, methylation of lysine 372 has been shown to positively affect the stability of p53. Mutations in p53 are involved in a vast majority of human cancers.
Synonyms:	BCC7; LFS1; P53; TRP53
Protein Families:	Druggable Genome, Stem cell - Pluripotency, Transcription Factors



[View online »](#)

Protein Pathways:

Amyotrophic lateral sclerosis (ALS), Apoptosis, Basal cell carcinoma, Bladder cancer, Cell cycle, Chronic myeloid leukemia, Colorectal cancer, Endometrial cancer, Glioma, Huntington's disease, MAPK signaling pathway, Melanoma, Neurotrophin signaling pathway, Non-small cell lung cancer, p53 signaling pathway, Pancreatic cancer, Pathways in cancer, Prostate cancer, Small cell lung cancer, Thyroid cancer, Wnt signaling pathway

Product images:

WB was performed on 100 ug Colon carcinoma whole cell extract (HCT116 WCE) using the antibody against p53K372me1, diluted 1:200 in TBS-Tween containing 5% skimmed milk. The size and location of the protein of interest are indicated (Figure 1, kindly provided by Liu Xiangyu, Health Science Center, Peking University, China).