

Product datasheet for **TA347304**

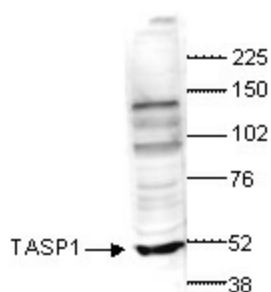
TASP1 Rabbit Polyclonal Antibody

Product data:

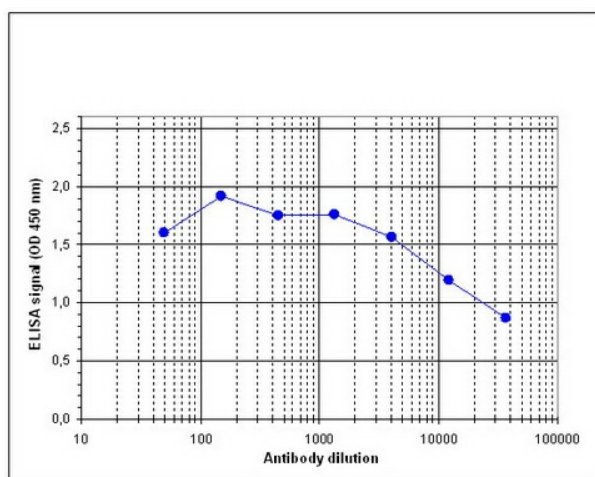
| | |
|-----------------------|---------------------------------------------------------------------------------------------------------------------------------------------------------------------------------------------------------------------------------------------------------------------------------------------------------------------------------------------------------------------------------------------------------------------------------------------|
| Product Type: | Primary Antibodies |
| Applications: | ELISA, WB |
| Recommended Dilution: | ELISA (1:1,000) ; Western blotting (1:500) |
| Reactivity: | Human |
| Host: | Rabbit |
| Isotype: | IgG |
| Clonality: | Polyclonal |
| Immunogen: | The immunogen for anti-TASP1 antibody: mouse human TASP1 (Threonine aspartase 1), using three KLH-conjugated synthetic peptides: two containing an amino acid sequence from the N-terminal part of the protein and one containing an amino acid sequence from t |
| Concentration: | lot specific |
| Purification: | Whole antiserum from rabbit containing 0.05% azide. |
| Conjugation: | Unconjugated |
| Storage: | Store at -20°C as received. |
| Stability: | Stable for 12 months from date of receipt. |
| Gene Name: | taspase 1 |
| Database Link: | NP_060184 Entrez Gene 55617 Human Q9H6P5 |
| Background: | TASP1 (UniProt/Swiss-Prot entry Q9H6P5) is an endopeptidase which cleaves specific substrates after an aspartate residue. It is required for the posttranslational processing of MLL, a histone methyl transferase which is essential for the maintenance of HOX gene expression and for the transcription factor TFIIA. Therefore, TASP1 may have an important function in the regulation of gene transcription and embryonic development. |
| Synonyms: | C20orf13; dj585l14.2 |
| Protein Families: | Protease |


[View online »](#)

Product images:



WB using the antibody against TASP1 diluted 1:500 in TBS-Tween containing 5% skimmed milk. The position of the protein of interest (expected size: 44.5 kDa) is indicated on the left; the marker (in kDa) is shown on the right.



Determination of the titer To determine the titer, an ELISA was performed using a serial dilution of the antibody against human TASP1. The plates were coated with a mix of the peptides used for immunization of the rabbit. By plotting the absorbance against the antibody dilution (Figure 1), the titer of the antibody was estimated to be 1:43, 500.