

Product datasheet for **TA347298**

SSRP1 Rabbit Polyclonal Antibody

Product data:

Product Type:	Primary Antibodies
Applications:	WB
Recommended Dilution:	Western blotting (1:1,000)
Reactivity:	Human
Host:	Rabbit
Isotype:	IgG
Clonality:	Polyclonal
Immunogen:	The immunogen for anti-SSRP1 antibody: human SSRP1 (Structure-specific recognition protein 1), the GST tagged N-terminal part of the protein.
Concentration:	lot specific
Purification:	Protein G purified polyclonal antibody in PBS containing 0.05% azide and 0.05% ProClin 300.
Conjugation:	Unconjugated
Storage:	Store at -20°C as received.
Stability:	Stable for 12 months from date of receipt.
Gene Name:	structure specific recognition protein 1
Database Link:	NP_003137 Entrez Gene 6749 Human Q08945



[View online »](#)

Background:

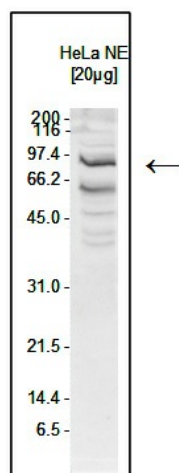
SSRP1 (UniProtKB/Swiss-Prot entry Q08945) is a component of the FACT complex, a general chromatin factor that acts to reorganize nucleosomes. The FACT complex, which besides SSRP1 also contains SUPT16H (SPT16) is involved in multiple processes that require DNA as a template such as mRNA elongation, DNA replication and DNA repair. During transcription elongation the FACT complex acts as a histone chaperone that both destabilizes and restores nucleosomal structure. It facilitates the passage of RNA polymerase II and transcription by promoting the dissociation of one histone H2A-H2B dimer from the nucleosome, subsequently promoting the reestablishment of the nucleosome following the passage of RNA polymerase II. The FACT complex is probably also involved in phosphorylation of 'Ser-392' of p53/TP53 via its association with CK2 (casein kinase II). SSRP1 binds specifically to double-stranded DNA and at low levels to DNA modified by the antitumor agent cisplatin. SSRP1 may potentiate cisplatin-induced cell death by blocking replication and repair of modified DNA. SSRP1 also acts as a transcriptional coactivator for p63/TP73L.

Synonyms:

FACT; FACT80; T160

Protein Families:

Transcription Factors

Product images:


WB was performed on nuclear extracts from HeLa cells (20 ug) using the antibody against hSSRP1 diluted 1:1,000 in TBS-Tween containing 5% skimmed milk. A molecular weight marker (in kDa) is shown on the left. The location of the protein of interest is indicated by an arrow.