

## Product datasheet for **TA347296**

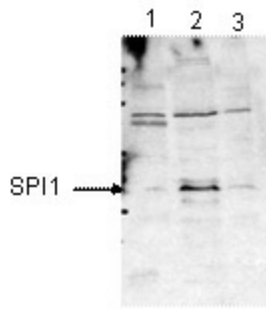
### SPI1 Rabbit Polyclonal Antibody

#### Product data:

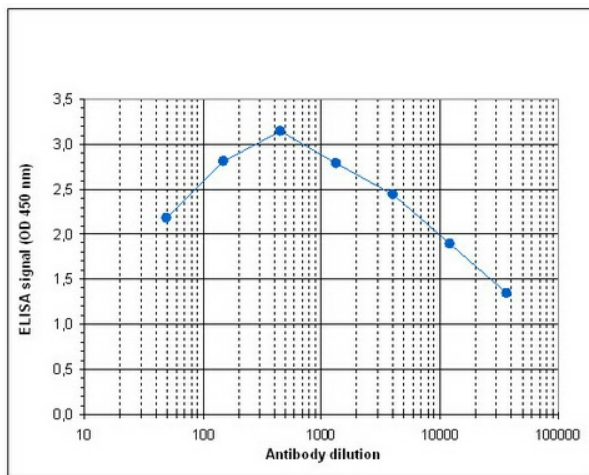
Product Type:	Primary Antibodies
Applications:	ELISA, WB
Recommended Dilution:	ELISA (1:100 ?? 1:500); Western blotting (1:1,000)
Reactivity:	Mouse
Host:	Rabbit
Isotype:	IgG
Clonality:	Polyclonal
Immunogen:	The immunogen for anti-SPI1 antibody: mouse SPI1 (spleen focus forming virus (SFFV) proviral integration oncogene), using two KLH-conjugated synthetic peptides containing a sequence from the N-terminus and from the C-terminus of the protein, respectively.
Concentration:	lot specific
Purification:	Whole antiserum from rabbit containing 0.05% azide.
Conjugation:	Unconjugated
Storage:	Store at -20°C as received.
Stability:	Stable for 12 months from date of receipt.
Gene Name:	Spi-1 proto-oncogene
Database Link:	<a href="#">NP_003111</a> <a href="#">Entrez Gene 20375 Mouse P17947</a>
Background:	SPI1 (UniProt/Swiss-Prot entry P17947) is an ETS-domain transcription factor that binds to a purine-rich DNA sequence (5'-GAGGAA-3') found near the promoters of target genes, also known as the PU-box. SPI1 is a transcriptional activator that may be involved in myeloid and B-lymphoid cell development. Further, SPI1 may also be important for the regulation of splicing of target genes.
Synonyms:	OF; PU.1; SFPI1; SPI-1; SPI-A
Protein Families:	Transcription Factors
Protein Pathways:	Acute myeloid leukemia, Pathways in cancer



[View online »](#)

**Product images:**


WB was performed using and the ab against mouse SPI1 at 1:1,000 in TBS-Tween containing 5% milk. Image shows the results for mouse fibroblasts (3T3, lane 1), macrophages (RAW, lane 2) and pre-B cells (HAFTL, lane 3). The position of the protein of interest (expected size: 31 kDa) is indicated on the left. Fibroblasts do not express SPI1, whereas macrophages show a high and pre-B cells a low expression of SPI1. WB performed by Maribel Parra, Center for Genomic Regulation, Barcelona, Spain.



Determination of the titer To determine the titer, an ELISA was performed using a serial dilution of the antibody against mouse SPI1. The plates were coated with the peptides used for immunization of the rabbit. By plotting the absorbance against the antibody dilution (Figure 1), the titer of the antibody was estimated to be 1:2, 600.