

## Product datasheet for **TA347295**

### SOX4 Rabbit Polyclonal Antibody

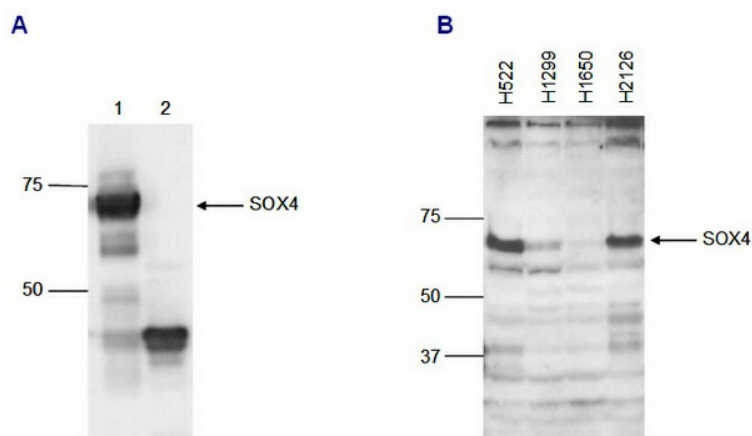
#### Product data:

Product Type:	Primary Antibodies
Applications:	ELISA, WB
Recommended Dilution:	ELISA (1:100 ?? 1:1,000); Western blotting (1:4,000)
Reactivity:	Human
Host:	Rabbit
Isotype:	IgG
Clonality:	Polyclonal
Immunogen:	The immunogen for anti-SOX4 antibody: human SOX4 (SRY (sex determining region Y)-box 4), using two KLH-conjugated synthetic peptides containing a sequence from the N-terminus and from the C-terminus of the protein, respectively.
Concentration:	lot specific
Purification:	Whole antiserum from rabbit containing 0.05% azide.
Conjugation:	Unconjugated
Storage:	Store at -20°C as received.
Stability:	Stable for 12 months from date of receipt.
Gene Name:	SRY-box 4
Database Link:	<a href="#">NP_003098</a> <a href="#">Entrez Gene 6659 Human</a> <a href="#">Q06945</a>
Background:	SOX4 (UniProtKB/Swiss-Prot entry Q06945) belongs to the SOX family of transcription factors. These transcription factors are characterized by the conserved HMG (high mobility group) DNA binding domain and are involved in embryonic development. SOX4 has been shown to be important for the development of the cardiac outflow tract and of the central nervous system. SOX 4 may also be involved in the apoptosis pathway were it can either lead to cell death or to tumorigenesis, and has been associated with several human cancer types.
Synonyms:	EVI16
Protein Families:	Druggable Genome, ES Cell Differentiation/IPS, Induced pluripotent stem cells, Stem cell relevant signaling - TGFb/BMP signaling pathway, Transcription Factors

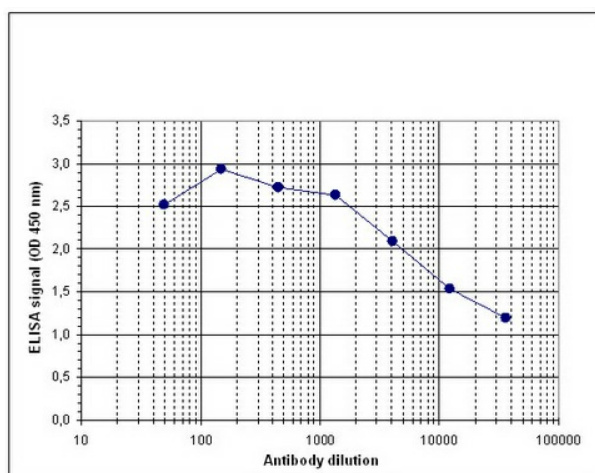


[View online »](#)

## Product images:



WB using the antibody against SOX4 diluted 1:4,000 in TBS-Tween containing 2% skimmed milk. The position of the protein of interest is indicated on the right; the marker (in kDa) is shown on the left. B. Whole cell extracts of 4 different lung carcinoma cell lines were analysed by WB performed by Montse Sanchez-Cespedes and Sandra Castillo Diez, Catalan Institute of Oncology, Barcelona, Spain.



Determination of the titer To determine the titer, an ELISA was performed using a serial dilution of the antibody against human SOX4. The plates were coated with the peptides used for immunization of the rabbit. By plotting the absorbance against the antibody dilution (Figure 1), the titer of the antibody was estimated to be 1:18,000.