

Product datasheet for **TA347289**

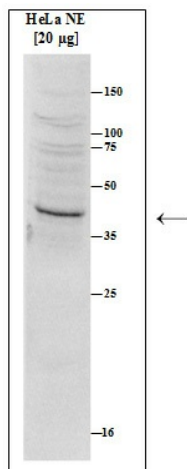
KMT5A Rabbit Polyclonal Antibody

Product data:

Product Type:	Primary Antibodies
Applications:	WB
Recommended Dilution:	Western blotting (1:1,000)
Reactivity:	Human, Mouse
Host:	Rabbit
Isotype:	IgG
Clonality:	Polyclonal
Immunogen:	The immunogen for anti-SETD8 antibody: human SETD8 (SET domain containing 8), using the full length protein containing a Flag-tagged N-terminus and a His-tagged C terminus.
Concentration:	lot specific
Purification:	Protein G purified polyclonal antibody in PBS containing 0.05% azide and 0.05% ProClin 300.
Conjugation:	Unconjugated
Storage:	Store at -20°C as received.
Stability:	Stable for 12 months from date of receipt.
Gene Name:	lysine methyltransferase 5A
Database Link:	NP_065115 Entrez Gene 67956 Mouse Entrez Gene 387893 Human Q9NQR1
Background:	SETD8 (UniProtKB/Swiss-Prot entry Q9NQR1) is a histone methyl transferase that specifically monomethylates 'Lys-20' of histone H4. This histone modification represents a specific tag for epigenetic transcriptional repression and is enriched during mitosis. SETD8 may also play a role in maintaining silent chromatin by preventing the acetylation of the H4 tail.
Synonyms:	PR-Set7; SET07; SET8; SETD8
Protein Families:	Druggable Genome
Protein Pathways:	Lysine degradation



[View online »](#)

Product images:

WB was performed on nuclear extracts from HeLa cells (HeLa NE, 20 ug) using the antibody against SETD8 diluted 1:1000 in TBS-Tween containing 5% skimmed milk. The molecular weight marker (in kDa) is shown on the right; the location of the protein of interest is indicated by an arrow.