

Product datasheet for **TA347286**

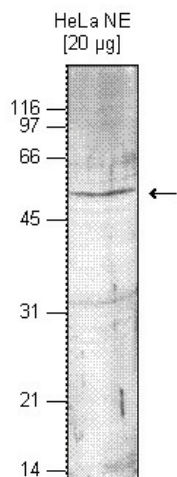
SETD7 Rabbit Polyclonal Antibody

Product data:

Product Type:	Primary Antibodies
Applications:	WB
Recommended Dilution:	Western blotting (1:1,000)
Reactivity:	Human
Host:	Rabbit
Isotype:	IgG
Clonality:	Polyclonal
Immunogen:	The immunogen for anti-Set9 antibody: human Set9 (SET domain containing (lysine methyltransferase) 9), using a recombinant protein.
Concentration:	lot specific
Purification:	Whole antiserum from rabbit containing 0.05% azide.
Conjugation:	Unconjugated
Storage:	Store at -20°C as received.
Stability:	Stable for 12 months from date of receipt.
Gene Name:	SET domain containing lysine methyltransferase 7
Database Link:	NP_085151 Entrez Gene 80854 Human Q8WTS6
Background:	Set9 (UniProtKB/Swiss-Prot entry Q8WTS6) is a histone methyltransferase which specifically methylates lysine 4 of histone H3 being a specific tag for epigenetic transcriptional activation. Further, methylation of histone H3K4 by Set9 precludes deacetylation of H3 by the NuRD complex and impairs Suv39h1-mediated methylation of H3K9. Set9 also methylates the tumor suppressor p53 at lysine 372, thereby enhancing its stability. It contains a SET domain but lacks the pre- and post-SET domains.).
Synonyms:	9; KMT7; SET7; SET9
Protein Families:	Druggable Genome
Protein Pathways:	Lysine degradation



[View online »](#)

Product images:

WB was performed on nuclear extracts from HeLa cells (HeLa NE, 20 ug) using the antibody against Set9 diluted 1:1,000 in TBS-Tween containing 5% skimmed milk. A molecular weight marker (in kDa) is shown on the left; the location of the protein of interest is indicated on the right.