

Product datasheet for **TA347285**

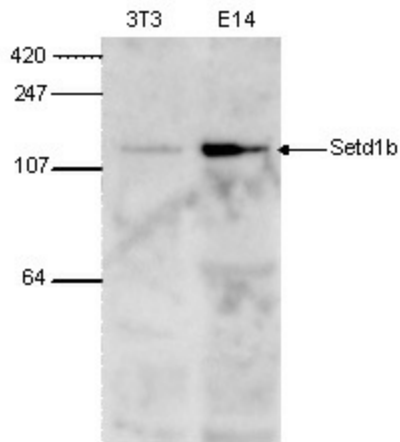
SETD1B Rabbit Polyclonal Antibody

Product data:

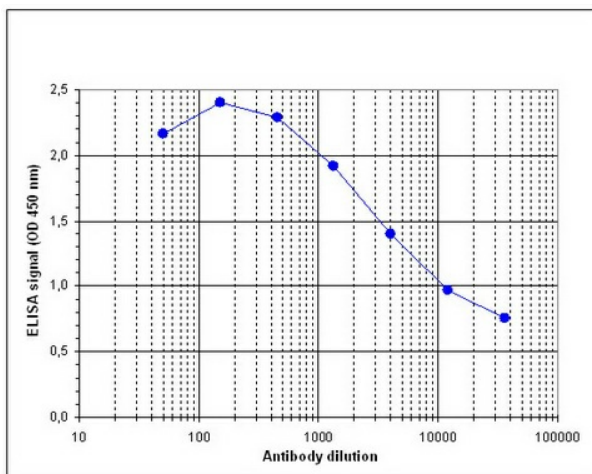
Product Type:	Primary Antibodies
Applications:	ELISA, WB
Recommended Dilution:	ELISA (1:100 ?? 1:500) ; Western blotting (1:500)
Reactivity:	Mouse
Host:	Rabbit
Isotype:	IgG
Clonality:	Polyclonal
Immunogen:	The immunogen for anti-Setd1b antibody: mouse Setd1b (Set domain containing 1B), using a 3 KLH-conjugated synthetic peptides containing sequences from the central part of the protein.
Concentration:	lot specific
Purification:	Whole antiserum from rabbit containing 0.05% azide.
Conjugation:	Unconjugated
Storage:	Store at -20°C as received.
Stability:	Stable for 12 months from date of receipt.
Gene Name:	SET domain containing 1B
Database Link:	NP_055863 Entrez Gene 23067 Human Q9UPS6
Background:	SETD1B (UniProt/Swiss-Prot entry Q9UPS6) is a component of the SET1 histone methyltransferase (HMT) complex. This complex specifically methylates lysine 4 of histone H3, but only if the neighboring lysine 9 residue is not yet methylated. Methylation of H3K4 represents a specific tag for epigenetic transcriptional activation. SETD1B shows a non-overlapping localization with SETD1A, suggesting that both proteins play a specific role in the epigenetic control of chromatin structure and gene expression.
Synonyms:	KMT2G; Set1B
Protein Families:	Druggable Genome
Protein Pathways:	Lysine degradation



[View online »](#)

Product images:


WB was performed on whole cell lysates from mouse fibroblasts (NIH3T3) and embryonic stem cells (E14Tg2a) with the antibody against mouse Setd1b, diluted 1:500 in BSA/PBS-Tween. The molecular weight marker (in kDa) is shown on the left; the location of the protein of interest is indicated on the right.



Determination of the titer To determine the titer, an ELISA was performed using a serial dilution of the antibody against mouse Setd1b. The plates were coated with a mix of the peptides used for immunization of the rabbit. By plotting the absorbance against the antibody dilution (Figure 1), the titer of the antibody was estimated to be 1:8,400.