

Product datasheet for **TA347283**

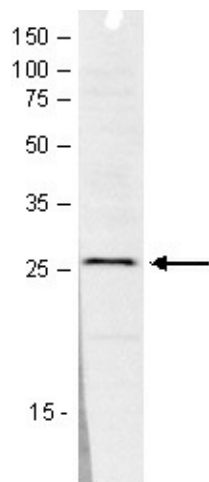
SAP30 Rabbit Polyclonal Antibody

Product data:

Product Type:	Primary Antibodies
Applications:	WB
Recommended Dilution:	Western blotting (1:1,000)
Reactivity:	Human
Host:	Rabbit
Isotype:	IgG
Clonality:	Polyclonal
Immunogen:	The immunogen for anti-SAP30 antibody: human SAP30 (Sin3-associated polypeptide, 30kDa), using the full length His-tagged protein.
Concentration:	lot specific
Purification:	Protein G purified polyclonal antibody in PBS containing 0.05% azide and 0.05% ProClin 300.
Conjugation:	Unconjugated
Storage:	Store at -20°C as received.
Stability:	Stable for 12 months from date of receipt.
Gene Name:	Sin3A associated protein 30kDa
Database Link:	NP_003855 Entrez Gene 8819 Human O75446
Background:	SAP30 (UniProtKB/Swiss-Prot entry O75446) is a component of the histone deacetylase complex, which also includes SIN3, SAP18, HDAC1, HDAC2, RbAp46, RbAp48. Histone acetylation and deacetylation play a key role in the regulation of eukaryotic gene expression. This complex only deacetylates core histone octamers, and is not able to deacetylate nucleosomal histones.
Synonyms:	30kD; 30kDa; histone deacetylase complex subunit SAP30; Sin3 corepressor complex subunit SAP30; Sin3-associated polypeptide; Sin3A-associated protein
Protein Families:	Druggable Genome, Transcription Factors



[View online »](#)

Product images:

WB was performed on nuclear extracts from HeLa cells (HeLa NE, 20 ug) using the antibody against SAP30 diluted 1:1000 in TBS-Tween containing 5% skimmed milk. The molecular weight marker (in kDa) is shown on the left; the location of the protein of interest is indicated on the right.