

## Product datasheet for **TA347278**

### RTF1 Rabbit Polyclonal Antibody

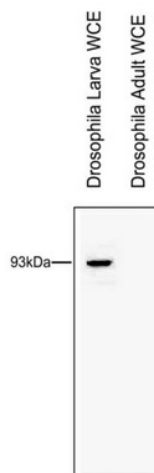
#### Product data:

Product Type:	Primary Antibodies
Applications:	WB
Recommended Dilution:	Western blotting (1:1,000); Immunofluorescence (1:50); Immunoprecipitation (12 µg per IP); ChIP (1 - 5 µg per ChIP)
Reactivity:	Drosophila
Host:	Rabbit
Isotype:	IgG
Clonality:	Polyclonal
Immunogen:	The immunogen for anti-Rtf1 antibody: drosophila Rtf1 (Rtf1, Paf1/RNA polymerase II complex component, homolog), using the full length recombinant protein.
Concentration:	lot specific
Purification:	In solution in PBS including 0.05% azide and 0.05% ProClin 300. The polyclonal antibody has been protein G purified.
Conjugation:	Unconjugated
Storage:	Store at -20°C as received.
Stability:	Stable for 12 months from date of receipt.
Gene Name:	RTF1 homolog, Paf1/RNA polymerase II complex component
Database Link:	<a href="#">NP_055953</a> <a href="#">Entrez Gene 23168 Human</a> <a href="#">Q92541</a>
Background:	PAF is a five-subunit protein complex composed of Paf1, Cdc73, Leo1, Rtf1 and Ctr9, which was first purified from yeast. The yeast PAF (yPAF) complex interacts with RNA polymerase II and coordinates the setting of histone marks associated with active transcription. The human PAF (hPAF) complex shares four subunits with yPAF (hCtr9, hPaf1, hLeo1 and Cdc73), but contains an additional higher eukaryotic-specific subunit, hSki8. In addition to coordinating events during transcription (initiation, promoter clearance and elongation); PAF also coordinates events in RNA quality control.
Synonyms:	GTL7; KIAA0252



[View online »](#)

## Product images:



WB using the antibody against dRtf1, diluted 1:1000. Size and location of the protein are indicated.