

## Product datasheet for **TA347273**

### **RbAp48 (RBBP4) Mouse Monoclonal Antibody**

#### **Product data:**

<b>Product Type:</b>	Primary Antibodies
<b>Applications:</b>	WB
<b>Recommended Dilution:</b>	Western blotting (1:1,000)
<b>Reactivity:</b>	Human
<b>Host:</b>	Mouse
<b>Isotype:</b>	IgG2b
<b>Clonality:</b>	Monoclonal
<b>Immunogen:</b>	The immunogen for anti-RbAp 46/48 antibody: the full length human RbAp48 protein (Retinoblastoma-binding protein p48) fused to GST. The antibody recognizes both RbAp48 and RbAp46.
<b>Concentration:</b>	lot specific
<b>Purification:</b>	Protein G purified monoclonal antibody in PBS containing 0.05% azide and 0.05% ProClin 300.
<b>Conjugation:</b>	Unconjugated
<b>Storage:</b>	Store at -20°C as received.
<b>Stability:</b>	Stable for 12 months from date of receipt.
<b>Gene Name:</b>	RB binding protein 4, chromatin remodeling factor
<b>Database Link:</b>	<a href="#">NP_005601</a> <a href="#">Entrez Gene 5928 Human</a> <a href="#">Q09028</a>



[View online »](#)

**Background:**

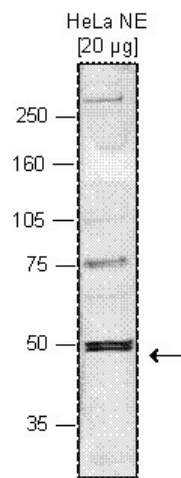
RbAp48 (UniProtKB/Swiss-Prot entry Q09028) is a component of several complexes which regulate chromatin metabolism. These include the chromatin assembly factor 1 (CAF-1) complex, which is required for chromatin assembly following DNA replication and DNA repair; the core histone deacetylase (HDAC) complex, which promotes histone deacetylation and consequent transcriptional repression; the nucleosome remodelling and histone deacetylase complex (the NuRD complex), which promotes transcriptional repression by histone deacetylation and nucleosome remodeling; the PRC2/EED-EZH2 complex, which promotes repression of homeotic genes during development; and the NURF (nucleosome remodeling factor) complex. Therefore it may target chromatin assembly factors as well as chromatin remodeling factors and histone deacetylases to their histone substrates in a nucleosomal DNA dependent manner.

**Synonyms:**

lin-53; NURF55; RBAP48

**Protein Families:**

Druggable Genome, Transcription Factors

**Product images:**

WB was performed using nuclear extracts from HeLa cells (HeLa NE, 20 ug) and the antibody against hRbAp46/48 diluted 1:1,000 in TBS-Tween containing 5% skimmed milk. The molecular weight marker (in kDa) is shown on the left, the position of the protein of interest is shown on the right.