

Product datasheet for **TA347263**

PHF8 Rabbit Polyclonal Antibody

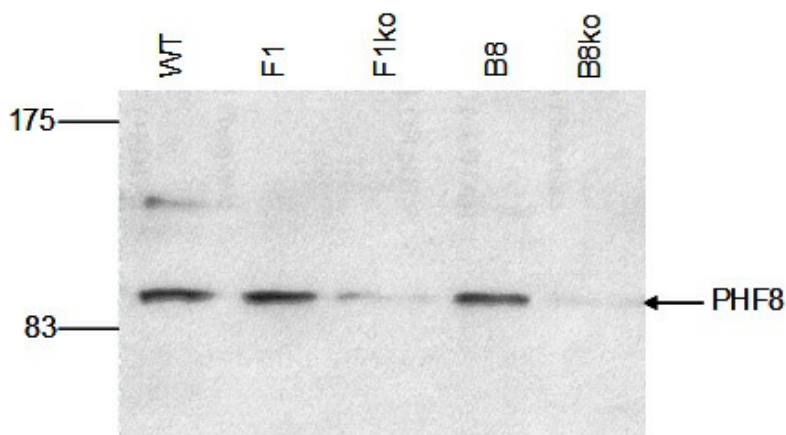
Product data:

| | |
|-----------------------|--|
| Product Type: | Primary Antibodies |
| Applications: | ELISA, WB |
| Recommended Dilution: | ELISA (1:100 ?? 1:500); Western blotting (1:1,000) |
| Reactivity: | Human, Mouse |
| Host: | Rabbit |
| Isotype: | IgG |
| Clonality: | Polyclonal |
| Immunogen: | The immunogen for anti-PHF8 antibody: human PHF8 (PHD finger protein 8), using 3 different KLH-conjugated synthetic peptides. |
| Concentration: | lot specific |
| Purification: | Affinity purified polyclonal antibody in PBS containing 0.05% azide and 0.05% ProClin 300. |
| Conjugation: | Unconjugated |
| Storage: | Store at -20°C as received. |
| Stability: | Stable for 12 months from date of receipt. |
| Gene Name: | PHD finger protein 8 |
| Database Link: | NP_001171825 Entrez Gene 320595 Mouse Entrez Gene 23133 Human Q9UPP1 |
| Background: | PHD finger protein 8 (UniProtKB/Swiss-Prot entry Q9UPP1) is a jumonji domain containing protein. Like other members of the jumonji family, PHF8 may therefore play a role in histone demethylation. Mutations in PHF8 lead to Siderius type X-linked mental retardation (MRXSSD), a mild to borderline type of mental retardation. |
| Synonyms: | JHDM1F; MRXSSD; ZNF422 |
| Protein Families: | Druggable Genome, Transcription Factors |

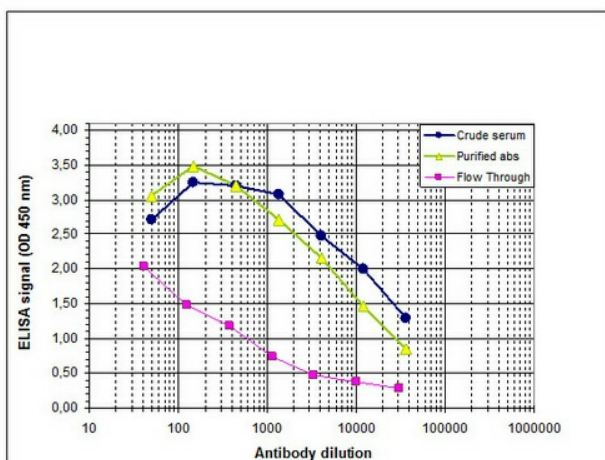


[View online »](#)

Product images:



WB using the antibody against PHF8. The antibody was diluted 1:1,000. The position of the protein of interest is indicated on the right; the marker (in kDa) is shown on the left.



Determination of the antibody titer To determine the titer of the antibody, an ELISA was performed using a serial dilution of the antibody against human PHF8, crude serum and Flow Through in antigen coated wells. By plotting the absorbance against the antibody dilution (Figure 1), the titer of the antibody was estimated to be 1:6,500.