

Product datasheet for **TA347261**

PAPOLA Rabbit Polyclonal Antibody

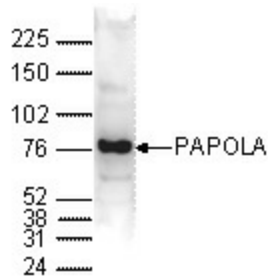
Product data:

Product Type:	Primary Antibodies
Applications:	ELISA, WB
Recommended Dilution:	ELISA (1:100 ?? 1:500); Western blotting (1:1,000)
Reactivity:	Human
Host:	Rabbit
Isotype:	IgG
Clonality:	Polyclonal
Immunogen:	The immunogen for anti-PAPOLA antibody: human PAPOLA (polyA polymerase alpha), using a KLH-conjugated synthetic peptide containing a sequence from the C-terminal part of the protein.
Concentration:	lot specific
Purification:	Whole antiserum from rabbit containing 0.05% azide.
Conjugation:	Unconjugated
Storage:	Store at -20°C as received.
Stability:	Stable for 12 months from date of receipt.
Gene Name:	poly(A) polymerase alpha
Database Link:	NP_116021 Entrez Gene 10914 Human P51003
Background:	PAPOLA (UniProtKB/Swiss-Prot entry P51003) is an RNA polymerase that generates the poly(A) tail of RNA's by adding AMP monomers to the 3'-end. PAPOLA may also be required for the endoribonucleolytic cleavage reaction at some polyadenylation sites.
Synonyms:	PAP
Protein Families:	Transcription Factors
Protein Pathways:	RNA degradation

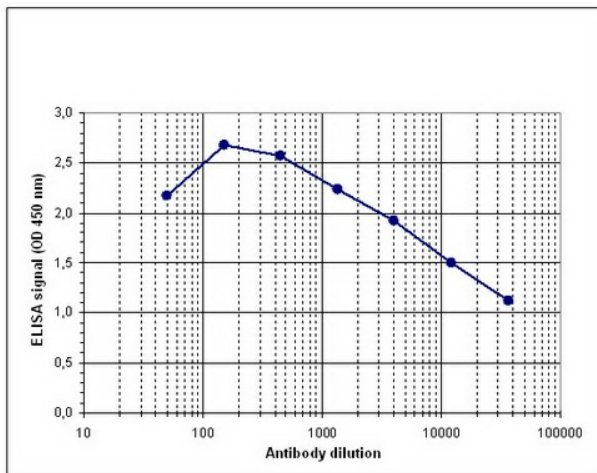


[View online »](#)

Product images:



WB using the antibody against PAPOLA diluted 1:1,000 in TBS-Tween containing 5% skimmed milk. The position of the protein of interest is indicated on the right (expected size: 83 kDa); the marker (in kDa) is shown on the left.



Determination of the titer To determine the titer, an ELISA was performed using a serial dilution of the antibody against human PAPOLA. The plates were coated with the peptide used for immunization of the rabbit. By plotting the absorbance against the antibody dilution (Figure 1), the titer of the antibody was estimated to be 1:22, 500.