

Product datasheet for **TA347260**

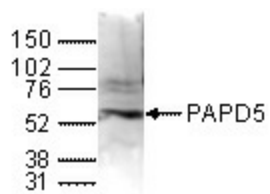
TRF4 2 (PAPD5) Rabbit Polyclonal Antibody

Product data:

Product Type:	Primary Antibodies
Applications:	WB
Recommended Dilution:	Western blotting (1:1,000)
Reactivity:	Human
Host:	Rabbit
Isotype:	IgG
Clonality:	Polyclonal
Immunogen:	The immunogen for anti-PAPD5 antibody: human PAPD5 (PAP associated domain containing 5), using a KLH-conjugated synthetic peptide containing a sequence from the C-terminal part of the protein.
Concentration:	lot specific
Purification:	Whole antiserum from rabbit containing 0.05% azide.
Conjugation:	Unconjugated
Storage:	Store at -20°C as received.
Stability:	Stable for 12 months from date of receipt.
Gene Name:	PAP associated domain containing 5
Database Link:	NP_001035374 Entrez Gene 64282 Human Q8NDF8
Background:	PAPD5 (UniProtKB/Swiss-Prot entry Q8NDF8) is an RNA polymerase which is involved in DNA repair. It also seems to have a function in sister chromatid cohesion.
Synonyms:	TRF4-2



[View online »](#)

Product images:

WB using the antibody against PAPD5 diluted 1:1,000 in TBS-Tween containing 5% skimmed milk. The position of the protein of interest is indicated on the right (expected size: 63 kDa); the marker (in kDa) is shown on the left.