

Product datasheet for **TA347259**

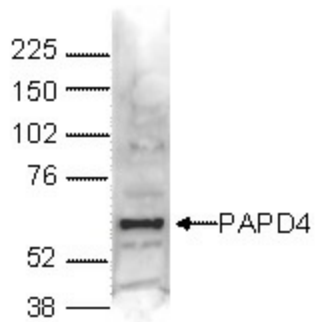
TENT2 Rabbit Polyclonal Antibody

Product data:

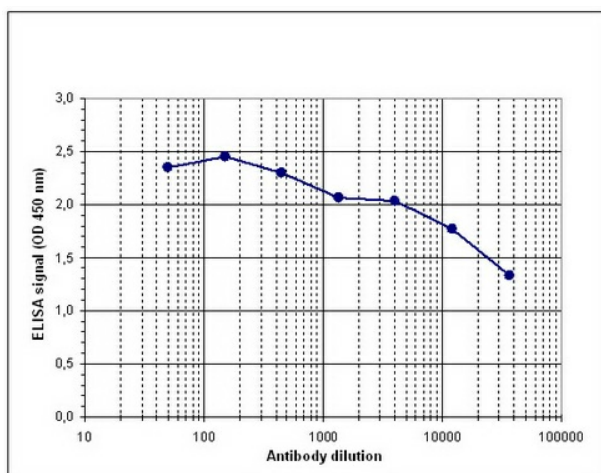
Product Type:	Primary Antibodies
Applications:	ELISA, WB
Recommended Dilution:	ELISA (1:100 ?? 1:1,000) ; Western blotting (1:1,000)
Reactivity:	Human
Host:	Rabbit
Isotype:	IgG
Clonality:	Polyclonal
Immunogen:	The immunogen for anti-PAPD4 antibody: human PAPD4 (PAP associated domain containing 4), using a KLH-conjugated synthetic peptide containing a sequence from the N-terminal part of the protein.
Concentration:	lot specific
Purification:	Whole antiserum from rabbit containing 0.05% azide.
Conjugation:	Unconjugated
Storage:	Store at -20°C as received.
Stability:	Stable for 12 months from date of receipt.
Gene Name:	PAP associated domain containing 4
Database Link:	NP_001107865 Entrez Gene 167153 Human Q6PIY7
Background:	PAPD4 (UniProtKB/Swiss-Prot entry Q6PIY7) is an RNA polymerase that generates the poly(A) tail of specific RNA's by adding AMP monomers to the 3'-end. In contrast to the canonical nuclear poly(A) RNA polymerase, this activity is restricted to selected cytoplasmic mRNAs.
Synonyms:	GLD2; TUT2



[View online »](#)

Product images:


WB using the antibody against PAPD4 diluted 1:1,000 in TBS-Tween containing 5% skimmed milk. The position of the protein of interest is indicated on the right (expected size: 56 kDa); the marker (in kDa) is shown on the left.



Determination of the titer To determine the titer, an ELISA was performed using a serial dilution of the antibody against human PAPD4. The plates were coated with the peptide used for immunization of the rabbit. By plotting the absorbance against the antibody dilution (Figure 1), the titer of the antibody was estimated to be 1:107,000.