

Product datasheet for **TA347254**

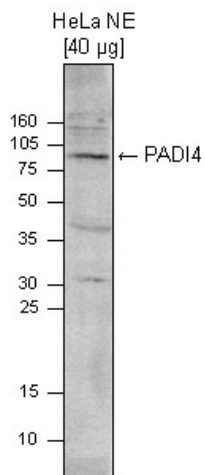
PADI4 Rabbit Polyclonal Antibody

Product data:

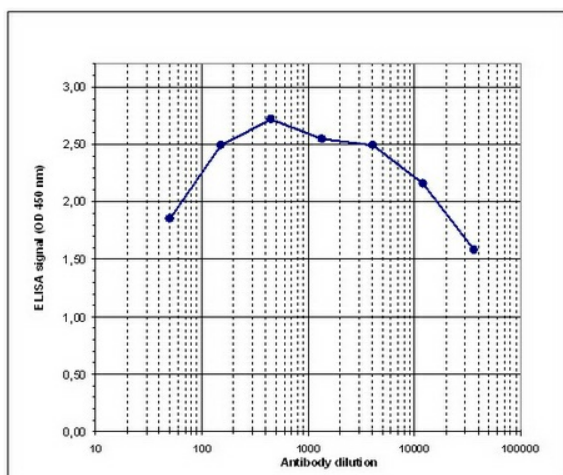
Product Type:	Primary Antibodies
Applications:	ELISA, WB
Recommended Dilution:	ELISA (1:1,000-1:5,000); Western blotting (1:1,000)
Reactivity:	Human
Host:	Rabbit
Isotype:	IgG
Clonality:	Polyclonal
Immunogen:	The immunogen for anti-PADI4 antibody: human PADI4 (Protein-arginine deiminase type-4), using a KLH-conjugated synthetic peptide containing a sequence from the N-terminus of the protein.
Concentration:	lot specific
Purification:	Whole antiserum from rabbit containing 0.05% azide.
Conjugation:	Unconjugated
Storage:	Store at -20°C as received.
Stability:	Stable for 12 months from date of receipt.
Gene Name:	peptidyl arginine deiminase 4
Database Link:	NP_036519 Entrez Gene 23569 Human Q9UM07
Background:	Protein arginine deiminases catalyse the conversion of arginine residues in proteins to citrulline. PADI4 (UniProt/Swiss-Prot entry Q9UM07) catalyses the citrullination-deimination of Arg-8 and Arg-17 from histone H3 and Arg-3 from histone H4. This prevents their methylation by CARM1 and HRMT1L2/PRMT1, thereby repressing transcription. PADI4 also citrullinates EP300/P300 at 'Arg-2142', which favours its interaction with NCOA2/GRIP.
Synonyms:	PAD; PAD4; PADI5; PDI4; PDI5



[View online »](#)

Product images:


WB was performed on nuclear extracts from HeLa cells (HeLa NE, 40 ug) with the antibody against PADI4, diluted 1:1,000 in TBS-Tween containing 5% skimmed milk is shown on the left; the location of the protein of interest is indicated on the right.



Determination of the antibody titer To determine the titer of the antibody, an ELISA was performed using a serial dilution of antibody against PADI4. The wells were coated with the peptide used for immunisation of the rabbit. By plotting the absorbance against the antibody dilution (Figure 1), the titer of the antibody was estimated to be 1: 40, 200.