

Product datasheet for **TA347249**

MTA2 Rabbit Polyclonal Antibody

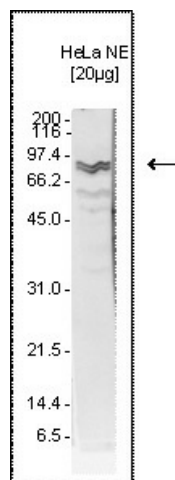
Product data:

Product Type:	Primary Antibodies
Applications:	WB
Recommended Dilution:	Western blotting (1:000)
Reactivity:	Human
Host:	Rabbit
Isotype:	IgG
Clonality:	Polyclonal
Immunogen:	The immunogen for anti-MTA2 antibody: human MTA2 (Human Metastasis associated 1 family, member 2), using a recombinant protein.
Concentration:	lot specific
Purification:	Protein G purified polyclonal antibody in PBS containing 0.05% azide and 0.05% ProClin 300.
Conjugation:	Unconjugated
Storage:	Store at -20°C as received.
Stability:	Stable for 12 months from date of receipt.
Gene Name:	metastasis associated 1 family member 2
Database Link:	NP_004730 Entrez Gene 9219 Human O94776
Background:	MTA2 (UniProtKB/Swiss-Prot entry O94776) is a component of the nucleosome-remodeling and histone-deacetylase multiprotein complex (NuRD). MTA2 may be involved in the regulation of gene expression as repressor and activator. The repression is probably related to covalent modification of histones. MTA2 interacts with HDAC7 and p53.
Synonyms:	MTA1L1; PID
Protein Families:	Druggable Genome, Transcription Factors



[View online »](#)

Product images:



WB was performed on nuclear extracts from HeLa cells (HeLa NE, 20 ug) using the antibody against MTA2 diluted 1:1,000 in TBS-Tween containing 5% skimmed milk. A molecular weight marker (in kDa) is shown on the left; the location of the protein of interest is indicated on the right.