

Product datasheet for **TA347246**

MECP2 Rabbit Polyclonal Antibody

Product data:

| | |
|-----------------------|--|
| Product Type: | Primary Antibodies |
| Applications: | ELISA, WB |
| Recommended Dilution: | ELISA (1:500 ?? 1:5,000) ; Western blotting (1:1,000) |
| Reactivity: | Mouse |
| Host: | Rabbit |
| Isotype: | IgG |
| Clonality: | Polyclonal |
| Immunogen: | The immunogen for anti-MeCP2 antibody: mouse MeCP2 (Methyl-CpG-binding domain Protein 2), using a KLH-conjugated synthetic peptide containing an amino acid sequence from the N-terminal part of the protein. |
| Concentration: | lot specific |
| Purification: | Whole antiserum from rabbit containing 0.05% azide. |
| Conjugation: | Unconjugated |
| Storage: | Store at -20°C as received. |
| Stability: | Stable for 12 months from date of receipt. |
| Gene Name: | methyl-CpG binding protein 2 |
| Database Link: | NP_004983 Entrez Gene 17257 Mouse P51608 |
| Background: | MeCP2 (UniProt/Swiss-Prot entry P51608) is a chromosomal protein with abundant binding sites in chromatin. It belongs to the family of methyl CpG binding proteins which also comprises MBD1, MBD2, MBD3 and MBD4. MeCP2 can bind specifically to methylated promoters, thereby repressing transcription. This transcriptional repression is mediated through interaction with histone deacetylase and the corepressor SIN3A. MeCP2 is essential for development. Mutations in MeCP2 are the cause of several types of mental retardation including Rett syndrome, a progressive neurological disorder that causes mental retardation in females, and mental retardation syndromic X-linked type 13, and may also be involved in Angelman syndrome and susceptibility to some types of autism. |



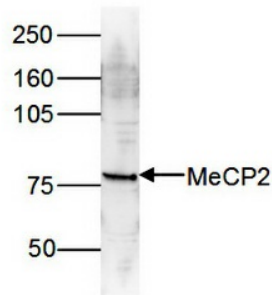
[View online »](#)

Synonyms: AUTSX3; MRX16; MRX79; MRXS13; MRXSL; PPMX; RS; RTS; RTT

Protein Families: Druggable Genome

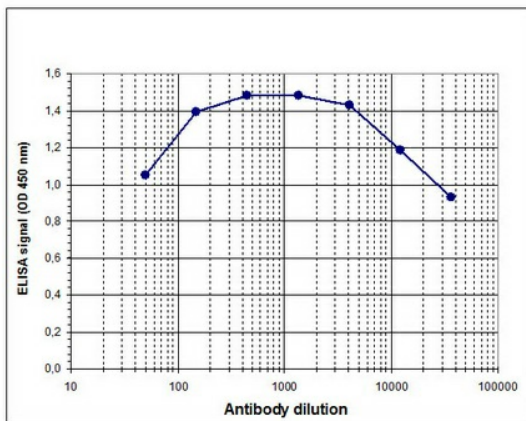
Product images:

Figure 2



C15310106-1, WB using the antibody against mouse MeCP2 diluted 1:1,000 in TBS-Tween containing 5% skimmed milk. The position of the protein of interest is indicated on the right; the marker (in kDa) is shown on the left.

Figure 1



C15310106-2, Determination of the titer. To determine the titer, an ELISA was performed using a serial dilution of the antibody against mouse MeCP2. The wells were coated with the peptide used for immunisation of the rabbit. By plotting the absorbance against the antibody dilution (Figure 1), the titer of the antibody was estimated to be 1:136,000.