

Product datasheet for **TA347241**

MBD3 Rabbit Polyclonal Antibody

Product data:

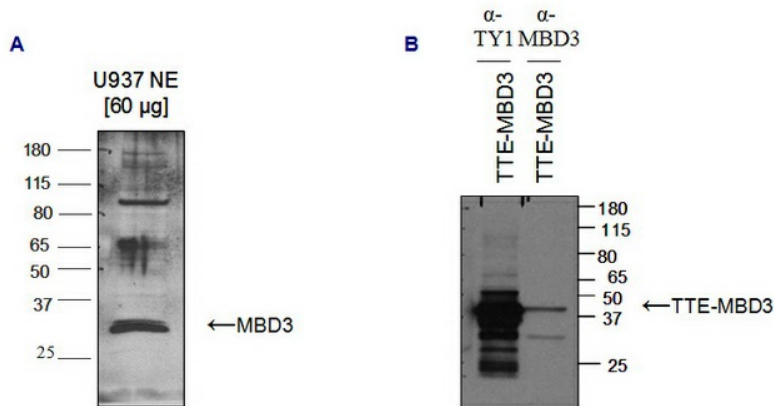
Product Type:	Primary Antibodies
Applications:	ELISA, WB
Recommended Dilution:	ELISA (1:100 ?? 1:500); Western blotting (1:2,000)
Reactivity:	Human
Host:	Rabbit
Isotype:	IgG
Clonality:	Polyclonal
Immunogen:	The immunogen for anti-MBD3 antibody: human MBD3 (Methyl-CpG-binding domain protein 3), using three different KLH-conjugated synthetic peptides.
Concentration:	lot specific
Purification:	Whole antiserum from rabbit containing 0.05% azide.
Conjugation:	Unconjugated
Storage:	Store at -20°C as received.
Stability:	Stable for 12 months from date of receipt.
Gene Name:	methyl-CpG binding domain protein 3
Database Link:	NP_001268382 Entrez Gene 53615 Human O95983
Background:	MBD3 (UniProtKB/Swiss-Prot entry O95983) is a transcriptional repressor which plays a role in gene silencing. Surprisingly, MBD3 does not seem to bind methylated DNA by itself, but acts by the recruitment of histone deacetylases and DNA methyltransferases. MBD3 also forms a heterodimer with MBD2 and is part of the NuRD and the MeCP1 complex. Further, MBD3 interacts with HDAC1, MTA2, DNMT1, p66-alpha and p66-beta.
Synonyms:	MBD3
Protein Families:	Druggable Genome, Transcription Factors



[View online »](#)

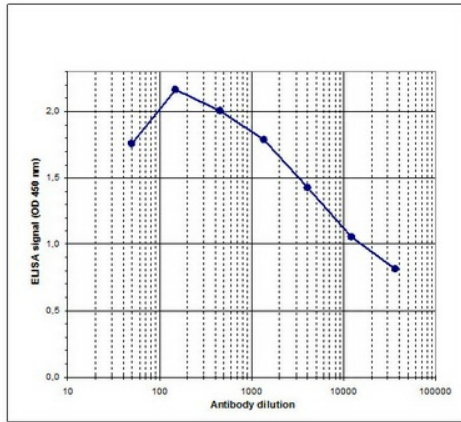
Product images:

Figure 2



WB on nuclear extracts from a Human leukemic monocyte lymphoma cell line (U937 NE, 60 ug) with the ab at 1:2,000 in TBS-Tween with 5% milk. B: TY1-tagged MBD3 (TTE-MBD3) was over-expressed in osteosarcoma cells (U2OS). Nuclear extracts were prepared and separated by electrophoresis. An ab against the TY1 tag or the ab against MBD3 (1:2,000 in TBS-Tween & 5% milk) were used to detect TTE-MBD3 (lane 1 and 2, respectively).

Figure 1



Determination of the antibody titer. To determine the titer of the antibody, an ELISA was performed using a serial dilution of the antibody against human MBD3. The wells were coated with the peptides used for immunisation of the rabbit. By plotting the absorbance against the antibody dilution (Figure 1), the titer of the antibody was estimated to be 1:13,890.