

Product datasheet for **TA347237**

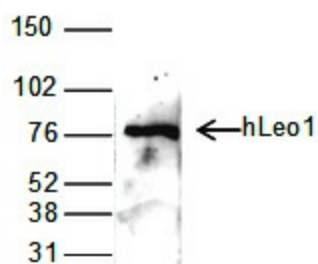
LEO1 Rabbit Polyclonal Antibody

Product data:

Product Type:	Primary Antibodies
Applications:	WB
Recommended Dilution:	Western blotting (1:2,000)
Reactivity:	Human
Host:	Rabbit
Isotype:	IgG
Clonality:	Polyclonal
Immunogen:	The immunogen for anti-Leo1 antibody: human Leo1 (component of the human PAF1/RNA polymerase II complex), using the full length recombinant protein.
Concentration:	lot specific
Purification:	Protein G purified polyclonal antibody in PBS containing 0.05% azide and 0.05% ProClin 300.
Conjugation:	Unconjugated
Storage:	Store at -20°C as received.
Stability:	Stable for 12 months from date of receipt.
Gene Name:	LEO1 homolog, Paf1/RNA polymerase II complex component
Database Link:	NP_620147 Entrez Gene 123169 Human Q8WVCO
Background:	PAF is a five-subunit protein complex composed of Paf1, Cdc73, Leo1, Rtf1 and Ctr9, which was first purified from yeast. The yeast PAF (yPAF) complex interacts with RNA polymerase II and coordinates the setting of histone marks associated with active transcription. The human PAF (hPAF) complex shares four subunits with yPAF (hCtr9, hPaf1, hLeo1 and Cdc73), but contains an additional higher eukaryotic-specific subunit, hSki8. In addition to coordinating events during transcription (initiation, promoter clearance and elongation); PAF also coordinates events in RNA quality control.
Synonyms:	RDL



[View online »](#)

Product images:

WB using the antibody against hLeo1 diluted 1:1,000 in TBS-Tween containing 5% skimmed milk. A MW marker is shown on the left, the location of the protein of interest is shown on the right.