

Product datasheet for **TA347233**

KMT2D Rabbit Polyclonal Antibody

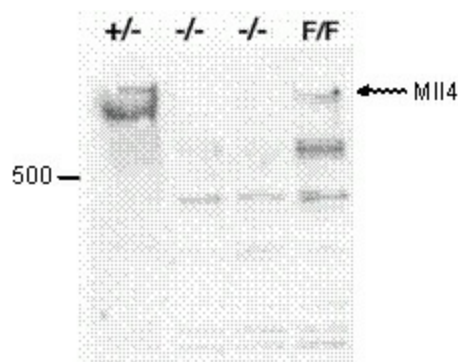
Product data:

Product Type:	Primary Antibodies
Applications:	ELISA, WB
Recommended Dilution:	ELISA (1:100 ?? 1:500) ; Western blotting (1:500)
Reactivity:	Mouse
Host:	Rabbit
Isotype:	IgG
Clonality:	Polyclonal
Immunogen:	The immunogen for anti-Mll4 antibody: mouse Mll4 (Myeloid/lymphoid or mixed-lineage leukemia protein 4), using three KLH-conjugated synthetic peptides containing an amino acid sequence from the central part of the protein
Concentration:	lot specific
Purification:	Whole antiserum from rabbit containing 0.05% azide.
Conjugation:	Unconjugated
Storage:	Store at -20°C as received.
Stability:	Stable for 12 months from date of receipt.
Gene Name:	lysine methyltransferase 2D
Database Link:	NP_003473 Entrez Gene 8085 Human O14686
Background:	Mll4 (UniProtKB/Swiss-Prot entry O14686) is involved in the methylation of lys 4 of histone H3, thus acting as a transcriptional regulator.
Synonyms:	AAD10; ALR; CAGL114; KABUK1; KMS; MLL2; MLL4; TNRC21
Protein Families:	Druggable Genome

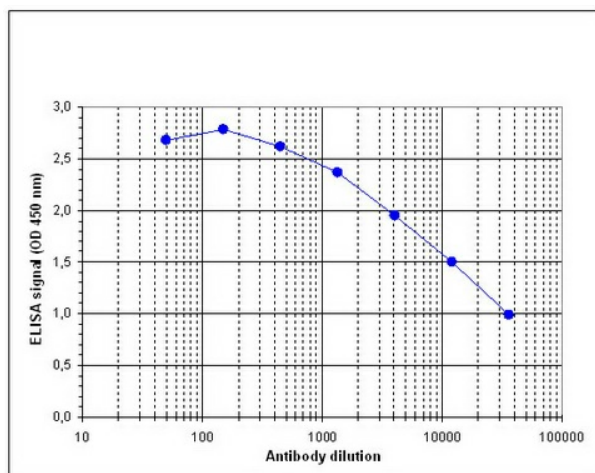


[View online »](#)

Product images:



WB was performed on whole cell lysates from mouse embryonic stem cells (E14Tg2a) with the mouse Mll4 ab, diluted 1:500 in PBS-Tween with 5% skimmed milk. The location of the protein of interest (~ 600 kDa) is indicated on the right; the location of the 500 kDa MW marker is shown on the left. Cells homozygous for the targeted *mll4* allele (-/-) show a complete loss of Mll4 protein, whereas the protein was detected in flp-recombined ES cells (F/F) and heterozygously targeted ES cells (+/-).



Determination of the titer To determine the titer, an ELISA was performed using a serial dilution of the antibody against mouse Mll4. The wells were coated with the peptides used for immunisation of the rabbit. By plotting the absorbance against the antibody dilution (Figure 1), the titer of the antibody was estimated to be 1:15,000.