

Product datasheet for **TA347221**

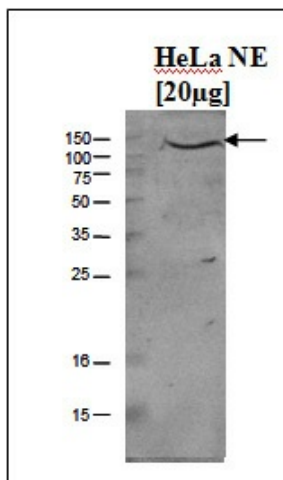
KDM1A Rabbit Polyclonal Antibody

Product data:

Product Type:	Primary Antibodies
Applications:	WB
Recommended Dilution:	ChIP (3 µg per ChIP); Western blotting (1:1,000)
Reactivity:	Human
Host:	Rabbit
Isotype:	IgG
Clonality:	Polyclonal
Immunogen:	The immunogen for anti-LSD1 antibody: human LSD1 (Lysine-specific demethylase 1), using the full length recombinant protein.
Concentration:	lot specific
Purification:	Protein G purified polyclonal antibody in PBS containing 0.05% azide and 0.05% ProClin 300.
Conjugation:	Unconjugated
Storage:	Store at -20°C as received.
Stability:	Stable for 12 months from date of receipt.
Gene Name:	lysine demethylase 1A
Database Link:	NP_001009999 Entrez Gene 23028 Human O60341
Background:	LSD1 (lysine specific demethylase 1, UniProt/Swiss-Prot entry O60341) is a component of the histone demethylase complex that uses FAD as a prosthetic group. LSD1 may have a dual effect on gene transcription. As it demethylates the mono- and dimethylated 'Lys-4' of histone H3, which are associated with transcriptional activation, LSD1 can act as a repressor of gene expression. However, LSD1 is also capable of demethylating 'Lys-9' of histone H3, a specific tag for epigenetic transcriptional repression, thereby leading to activation of androgen receptor target genes. LSD1 therefore mediates different processes such as embryonic development, cell differentiation and proliferation, stem and cancer cell biology.
Synonyms:	AOF2; BHC110; CPRF; KDM1; LSD1
Protein Families:	Druggable Genome, Transcription Factors



[View online »](#)

Product images:

WB was performed on nuclear extracts from HeLa cells (20 ug) using the antibody against LSD1 diluted 1:1,000 in TBS-Tween containing 5% skimmed milk. The molecular weight marker (in kDa) is shown on the left; the location of the protein of interest is indicated on the right.