

Product datasheet for **TA347163**

H3FA (HIST1H3A) Rabbit Polyclonal Antibody

Product data:

Product Type:	Primary Antibodies
Applications:	Dot, ELISA, WB
Recommended Dilution:	ChIP (5 ?? 10 µl/ChIP); ELISA (1:100); Dot blotting (1:20,000); Western blotting (1:750)
Reactivity:	Human
Host:	Rabbit
Isotype:	IgG
Clonality:	Polyclonal
Immunogen:	The immunogen for anti-H3K4me1 antibody: histone H3 containing the monomethylated lysine 4 (H3K4me1), using a KLH-conjugated synthetic peptide.
Concentration:	lot specific
Purification:	Whole antiserum from rabbit containing 0.05% azide.
Conjugation:	Unconjugated
Storage:	Store at -20°C as received.
Stability:	Stable for 12 months from date of receipt.
Gene Name:	histone cluster 1, H3a
Database Link:	NP_003520 Entrez Gene 8350 Human P68431

Background: Histones are the main constituents of the protein part of chromosomes of eukaryotic cells. They are rich in the amino acids arginine and lysine and have been greatly conserved during evolution. Histones pack the DNA into tight masses of chromatin. Two core histones of each class H2A, H2B, H3 and H4 assemble and are wrapped by 146 base pairs of DNA to form one octameric nucleosome. Histone tails undergo numerous post-translational modifications, which either directly or indirectly alter chromatin structure to facilitate transcriptional activation or repression or other nuclear processes. In addition to the genetic code, combinations of the different histone modifications reveal the so-called "histone code". Histone methylation and demethylation is dynamically regulated by respectively histone methyl transferases and histone demethylases.

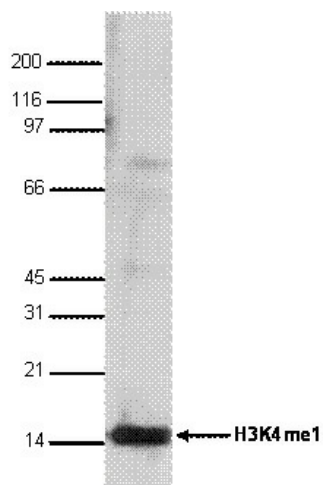


[View online »](#)

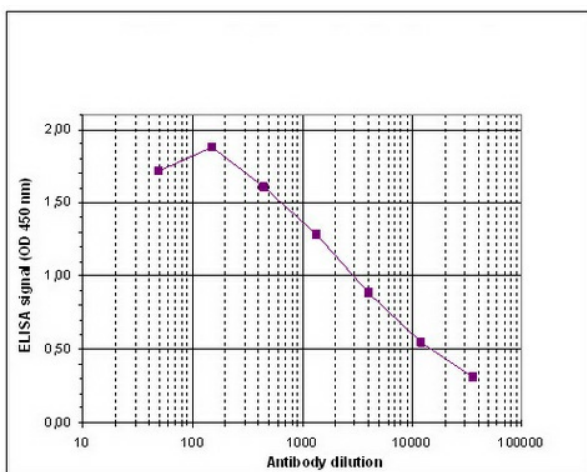
Synonyms: A; H3; H3FA

Protein Pathways: Systemic lupus erythematosus

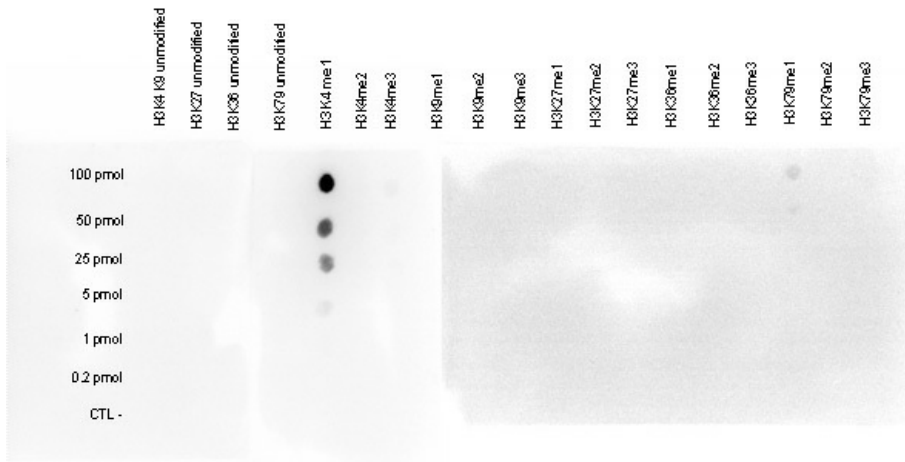
Product images:



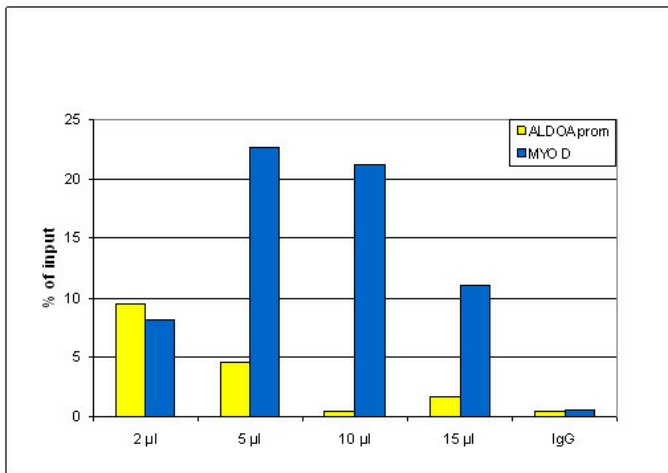
WB using the antibody against H3K4me1 diluted 1:750 in TBS-Tween containing 5% skimmed milk. The position of the protein of interest is indicated on the right; the marker (in kDa) is shown on the left.



Determination of the titer To determine the titer, an ELISA was performed using a serial dilution of the antibody against H3K4me1 (cat. No. CS-037-100). The antigen used was a peptide containing the histone modification of interest. By plotting the absorbance against the antibody dilution (Figure 2), the titer of the antibody was estimated to be 1:3,800.



Dot Blot analysis was performed to test the cross reactivity of the ab against H3K4me1 with peptides containing other modifications or unmodified sequences of histone H3. Other histone modifications include di- and trimethylation of the same lysine and mono-, di- and trimethylation of lysine 9, 27 and 36 and 79. One hundred to 0.2 pmol of the peptides were spotted on a membrane. The ab was used at a dilution of 1:20,000. Image shows a high specificity of the ab for the modification of interest.



ChIP assays were performed using human U2OS cells. IgG (5 ug/IP) was used as negative control. qPCR primers were for the promoter of the ALDOA gene and for the coding region of MYOD, a gene that is inactive at normal conditions. Image shows the recovery, expressed as a % of input (the relative amount of IP'd DNA compared to input DNA after qPCR analysis).