

## Product datasheet for **TA347136**

### HDAC2 Mouse Monoclonal Antibody

#### Product data:

Product Type:	Primary Antibodies
Applications:	WB
Recommended Dilution:	ChIP (1ug per IP); Western blotting (1:1,000); IF (1:500)
Reactivity:	Human
Host:	Mouse
Isotype:	IgG1, kappa
Clonality:	Monoclonal
Immunogen:	The immunogen for anti-HDAC2 antibody: human HDAC2 (Histone deacetylase 2), using a KLH-conjugated synthetic peptide containing a sequence from the C-terminal region of the protein
Concentration:	lot specific
Purification:	Protein A purified monoclonal antibody in PBS containing 0.05% azide and 0.05% ProClin 300.
Conjugation:	Unconjugated
Storage:	Store at -20°C as received.
Stability:	Stable for 12 months from date of receipt.
Gene Name:	histone deacetylase 2
Database Link:	<a href="#">NP_001518</a> <a href="#">Entrez Gene 3066 Human</a> <a href="#">Q92769</a>
Background:	HDAC2 (UniProt/Swiss-Prot entry Q92769) belongs to the family of histone deacetylases which catalyse the deacetylation of lysine residues on the N-terminal part of the core histones (H2A, H2B, H3 and H4). Acetylation and deacetylation of these highly conserved lysine residues is important for the control of gene expression and HDAC2 activity is associated with gene repression. Histone deacetylation is established by the formation of large multiprotein complexes. Thereby, HDAC2 associates with many different proteins, including the mammalian zinc-finger transcription factor YY1. HDAC2 thus plays an important role in transcriptional regulation, cell cycle progression and developmental events.
Synonyms:	HD2; RPD3; YAF1



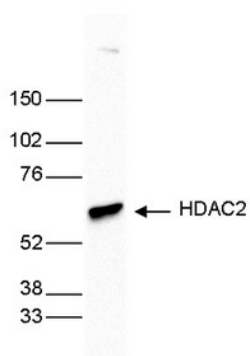
[View online »](#)

**Protein Families:** Druggable Genome, Stem cell - Pluripotency, Transcription Factors

**Protein Pathways:** Cell cycle, Chronic myeloid leukemia, Huntington's disease, Notch signaling pathway, Pathways in cancer

### Product images:

**Figure 1**



WB using the antibody against HDAC2 diluted 1:1,000 in TBS-Tween containing 5% skimmed milk. The position of the protein of interest is indicated on the right (expected size: 55 kDa); the marker (in kDa) is shown on the left.