

Product datasheet for **TA347128**

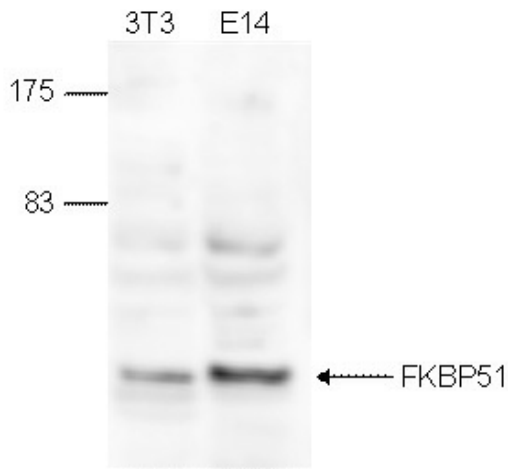
FKBP51 (FKBP5) Rabbit Polyclonal Antibody

Product data:

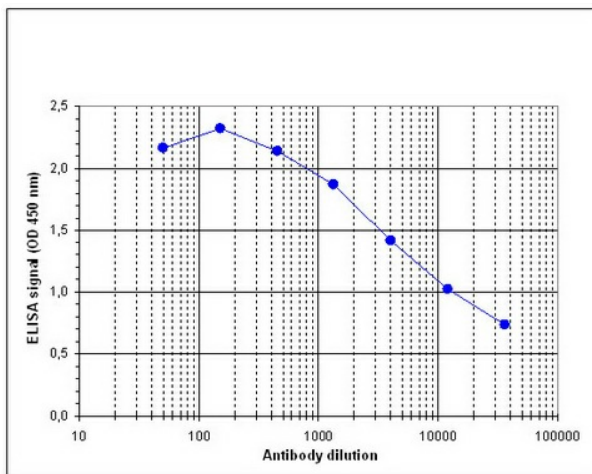
Product Type:	Primary Antibodies
Applications:	ELISA, WB
Recommended Dilution:	ELISA (1:100 ?? 1:500) ; Western blotting (1:500)
Reactivity:	Mouse
Host:	Rabbit
Isotype:	IgG
Clonality:	Polyclonal
Immunogen:	The immunogen for anti-FKBP51 antibody: mouse FKBP51 (FK506 Binding Protein 51), using two KLH-conjugated synthetic peptides containing an amino acid sequence from the central part of the protein
Concentration:	lot specific
Purification:	Whole antiserum from rabbit containing 0.05% azide.
Conjugation:	Unconjugated
Storage:	Store at -20°C as received.
Stability:	Stable for 12 months from date of receipt.
Gene Name:	FK506 binding protein 5
Database Link:	NP_004108 Entrez Gene 14229 Mouse Q13451
Background:	FKBP51 (UniProtKB/Swiss-Prot entry Q13451) is a member of the immunophilin protein family, which plays a role in immunoregulation and basic cellular processes involving protein folding and trafficking. It acts as a receptor for FK506 and rapamycin, two immunosuppressants which inhibit T-cell proliferation. FKBP51 is thought to mediate calcineurin inhibition and interacts with progesterone receptor complexes.
Synonyms:	AIG6; FKBP51; FKBP54; P54; PPIase; Ptg-10
Protein Families:	Druggable Genome



[View online »](#)

Product images:


WB was performed on whole cell lysates from mouse fibroblasts (NIH3T3) and embryonic stem cells (E14Tg2a) with the antibody against mouse FKBP51, diluted 1:500 in BSA/PBS-Tween. The molecular weight marker (in kDa) is shown on the left; the location of the protein of interest (expected size: 51 kDa) is indicated on the right.



Determination of the titer To determine the titer, an ELISA was performed using a serial dilution of the antibody against mouse FKBP51. The plates were coated with a mix of the peptides used for immunization of the rabbit. By plotting the absorbance against the antibody dilution (Figure 1), the titer of the antibody was estimated to be 1:9,400.