

Product datasheet for **TA347121**

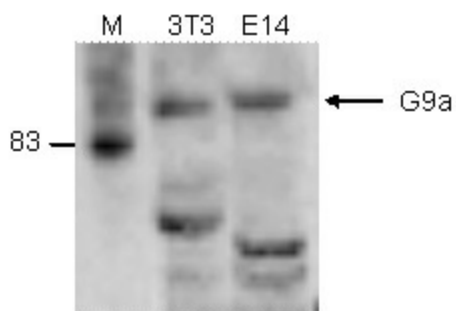
EHMT2/G9A (EHMT2) Rabbit Polyclonal Antibody

Product data:

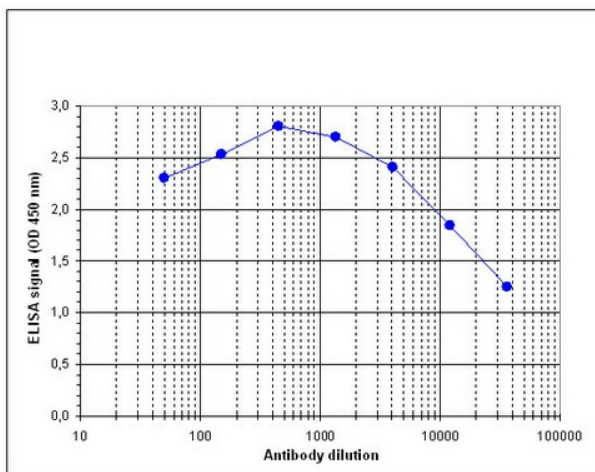
Product Type:	Primary Antibodies
Applications:	ELISA, WB
Recommended Dilution:	ELISA (1:500 ?? 1:1,000) ; Western blotting (1:1,000)
Reactivity:	Mouse
Host:	Rabbit
Isotype:	IgG
Clonality:	Polyclonal
Immunogen:	The immunogen for anti-G9a antibody: mouse G9a (Protein G9a), using two KLH-conjugated synthetic peptides containing an amino acid sequence from the central part of the protein
Concentration:	lot specific
Purification:	Whole antiserum from rabbit containing 0.05% azide.
Conjugation:	Unconjugated
Storage:	Store at -20°C as received.
Stability:	Stable for 12 months from date of receipt.
Gene Name:	euchromatic histone lysine methyltransferase 2
Database Link:	NP_079532 Entrez Gene 110147 Mouse Q96KQ7
Background:	G9a (UniProtKB/Swiss-Prot entry Q96KQ7) is a member of the Set 1 family of histone methyltransferases. It preferentially methylates K9 and K27 of histone H3. Methylation of H3K9 represents a specific tag for epigenetic transcriptional repression by recruiting HP1 proteins to methylated histones. G9a is a part of the E2F6.com-1 complex.
Synonyms:	BAT8; C6orf30; G9A; GAT8; KMT1C; NG36
Protein Families:	Druggable Genome
Protein Pathways:	Lysine degradation



[View online »](#)

Product images:


WB was performed on whole cell lysates from mouse fibroblasts (NIH3T3) and embryonic stem cells (E14Tg2a) cells with the antibody against mouse G9a, diluted 1:1,000 in BSA/PBS-Tween. The molecular weight marker (M, in kDa) is shown on the left; the location of the protein of interest (138 kDa) is indicated on the right.



Determination of the titer To determine the titer, an ELISA was performed using a serial dilution of the antibody against mouse G9a. The wells were coated with the peptides used for immunisation of the rabbit. By plotting the absorbance against the antibody dilution (Figure 1), the titer of the antibody was estimated to be 1:30,000.