

Product datasheet for **TA347120**

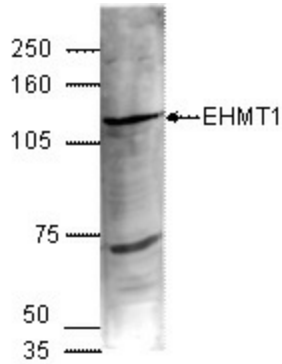
EHMT1/GLP (EHMT1) Rabbit Polyclonal Antibody

Product data:

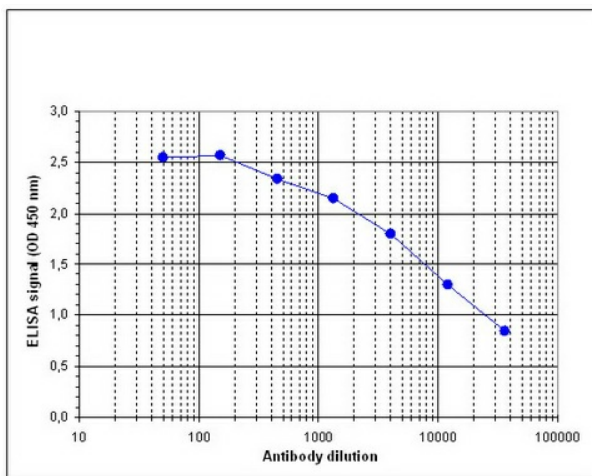
Product Type:	Primary Antibodies
Applications:	ELISA, WB
Recommended Dilution:	ELISA (1:100 ?? 1:200); Western blotting (1:500)
Reactivity:	Human, Mouse
Host:	Rabbit
Isotype:	IgG
Clonality:	Polyclonal
Immunogen:	The immunogen for anti-EHMT1 antibody: mouse Ehmt1 (euchromatic histone-lysine N-methyltransferase 1), using three KLH-conjugated synthetic peptides containing a sequence from the central part of the protein.
Concentration:	lot specific
Purification:	Whole antiserum from rabbit containing 0.05% azide.
Conjugation:	Unconjugated
Storage:	Store at -20°C as received.
Stability:	Stable for 12 months from date of receipt.
Gene Name:	euchromatic histone lysine methyltransferase 1
Database Link:	NP_079033 Entrez Gene 77683 Mouse Entrez Gene 79813 Human Q9H9B1
Background:	Ehmt1 (UniProt/Swiss-Prot entry Q9H9B1) is a histone methyltransferase which specifically methylates histone H3 on lysine 9. H3K9 methylation represents a marker for epigenetic transcriptional repression. This repression is established by recruiting HP1 proteins to the methylated histone. H3K9 methylation may contribute to silencing of MYC and E2F responsive genes and plays a role in murine embryogenesis.
Synonyms:	bA188C12.1; Eu-HMTase1; EUHMTASE1; FP13812; GLP; GLP1; KMT1D
Protein Families:	Druggable Genome
Protein Pathways:	Lysine degradation



[View online »](#)

Product images:


WB using the antibody against Ehmt1 diluted 1:1,000 in TBS-Tween containing 5% skimmed milk. The position of the protein of interest (expected size: 138 kDa) is indicated on the right; the marker (in kDa) is shown on the left.



Determination of the titer To determine the titer, an ELISA was performed using a serial dilution of the antibody against mouse Ehmt1. The plates were coated with a mix of the peptides used for immunization of the rabbit. By plotting the absorbance against the antibody dilution (Figure 1), the titer of the antibody was estimated to be 1:10,600.