

Product datasheet for **TA347115**

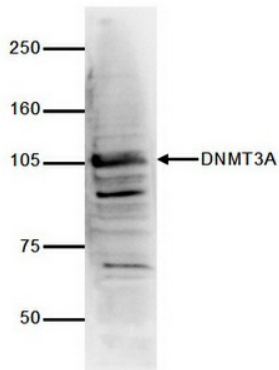
DNMT3A Rabbit Polyclonal Antibody

Product data:

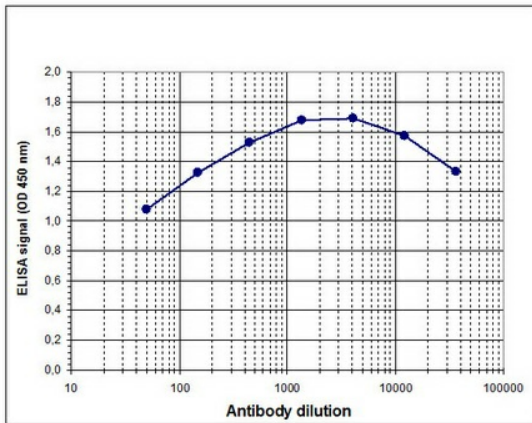
Product Type:	Primary Antibodies
Applications:	ELISA, WB
Recommended Dilution:	ELISA (1:1,000 ?? 1:10,000); Western blotting (1:500)
Reactivity:	Human, Mouse
Host:	Rabbit
Isotype:	IgG
Clonality:	Polyclonal
Immunogen:	The immunogen for anti-DNMT3A antibody: mouse DNMT3 (DNA methyltransferase 3A), using two KLH-conjugated synthetic peptides containing an amino acid sequence from the central part of the protein.
Concentration:	lot specific
Purification:	Whole antiserum from rabbit containing 0.05% azide.
Conjugation:	Unconjugated
Storage:	Store at -20°C as received.
Stability:	Stable for 12 months from date of receipt.
Gene Name:	DNA (cytosine-5-)-methyltransferase 3 alpha
Database Link:	NP_783328 Entrez Gene 13435 Mouse Entrez Gene 1788 Human Q9Y6K1
Background:	DNMT3A (UniProtKB/Swiss-Prot entry Q9Y6K1) catalyses the genome wide de novo methylation of CpG residues. DNA methylation on CpG residues by DNMT3A regulates gene expression and is essential for development. DNMT3A is strongly expressed in embryonic stem cells, but low in adult somatic cells. DNA methylation is coordinated with methylation of histones. DNMT3A binds to SETDB1 and HDAC1, and is involved in the repression of transcription from promoters containing an E2F binding site.
Synonyms:	DNMT3A2; M.HsaIIIA; TBRS
Protein Families:	Druggable Genome
Protein Pathways:	Cysteine and methionine metabolism, Metabolic pathways



[View online »](#)

Product images:
Figure 2:


C15310107-1, WB using the antibody against mouse DNMT3A diluted 1:500 in TBS-Tween containing 5% skimmed milk. The position of the protein of interest is indicated on the right; the marker (in kDa) is shown on the left.

Figure 1


To determine the titer of the antibody, ELISA was performed using a serial dilution of ab against mouse DNMT3A. The wells were coated with the peptides used as antigen. By plotting the absorbance against the antibody dilution (Figure 1), the titer of the antibody was estimated to be 1:86,500. Figure 2: WB using the ab against mouse DNMT3A at 1:500 in TBS-Tween containing 5% milk.