

Product datasheet for **TA347108**

CTR9 Rabbit Polyclonal Antibody

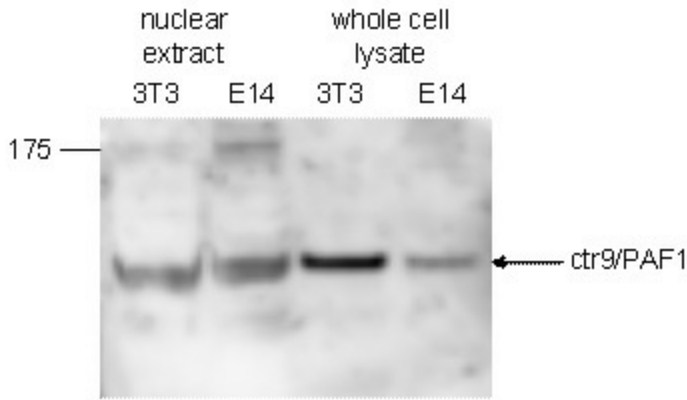
Product data:

Product Type:	Primary Antibodies
Applications:	ELISA, WB
Recommended Dilution:	ELISA (1:100 ?? 1:500) ; Western blotting (1:500)
Reactivity:	Mouse
Host:	Rabbit
Isotype:	IgG
Clonality:	Polyclonal
Immunogen:	The immunogen for anti-ctr9/PAF1 antibody: mouse ctr9/PAF1 (ctr9, Paf1/RNA polymerase II complex component), using a KLH-conjugated synthetic peptide containing an amino acid sequence from the N-terminal part of the protein.
Concentration:	lot specific
Purification:	Whole antiserum from rabbit containing 0.05% azide.
Conjugation:	Unconjugated
Storage:	Store at -20°C as received.
Stability:	Stable for 12 months from date of receipt.
Gene Name:	CTR9 homolog, Paf1/RNA polymerase II complex component
Database Link:	NP_055448 Entrez Gene 9646 Human Q6PD62
Background:	Ctr9/PAF1 (UniProt/Swiss-Prot entry Q6PD62) is part of the PAF protein complex, which associates with the RNA polymerase II subunit POLR2A. Beside its involvement in transcriptional initiation and RNA processing, the PAF complex also plays a role in the modification of histone tails as it is required for the methylation of lysine 4 and 79 of histone H3 and in the mono-ubiquitination of histone H2B at lysine 123.
Synonyms:	p150; p150TSP; SH2BP1; TSBP
Protein Families:	Protease

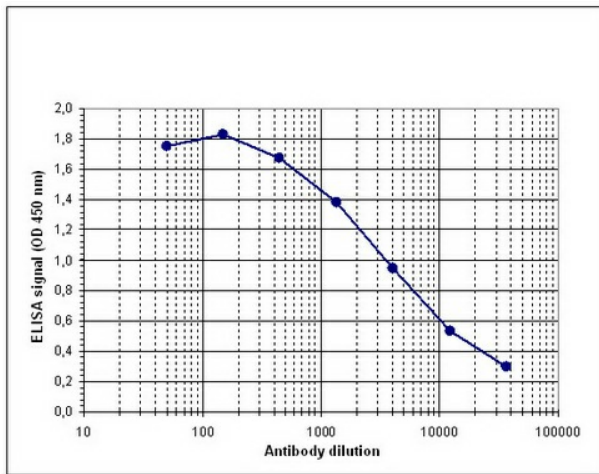


[View online »](#)

Product images:



WB was performed on nuclear extracts and whole cell lysates from mouse fibroblasts (NIH3T3) and embryonic stem cells (E14Tg2a) with the antibody against mouse ctr9/PAF1, diluted 1:500 in BSA/PBS-Tween. The molecular weight marker (in kDa) is shown on the left; the location of the protein of interest (expected size: 133 kDa) is indicated on the right.



Determination of the titer To determine the titer, an ELISA was performed using a serial dilution of the antibody against mouse ctr9/PAF1. The plates were coated with the peptide used for immunization of the rabbit. By plotting the absorbance against the antibody dilution (Figure 1), the titer of the antibody was estimated to be 1:4,600.