

Product datasheet for **TA347103**

Chromodomain helicase DNA binding protein 5 (CHD5) Rabbit Polyclonal Antibody

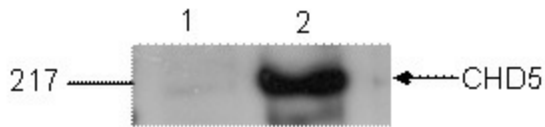
Product data:

Product Type:	Primary Antibodies
Applications:	ELISA, WB
Recommended Dilution:	ELISA (1:500 ?? 1:1,000) ; Western blotting (1:1,000)
Reactivity:	Human
Host:	Rabbit
Isotype:	IgG
Clonality:	Polyclonal
Immunogen:	The immunogen for anti-CHD5 antibody: human CHD5 (chromodomain helicase DNA binding protein 5), using two KLH-conjugated synthetic peptides containing a sequence from the N-terminus and from the central part of the protein, respectively.
Concentration:	lot specific
Purification:	Whole antiserum from rabbit containing 0.05% azide.
Conjugation:	Unconjugated
Storage:	Store at -20°C as received.
Stability:	Stable for 12 months from date of receipt.
Gene Name:	chromodomain helicase DNA binding protein 5
Database Link:	NP_056372 Entrez Gene 26038 Human Q8TDI0
Background:	CHD5 (UniProt/Swiss-Prot entry Q8TDI0) belongs to a group of SWI/SNF proteins called CHD proteins. Beside a SWI/SNF-like helicase/ATPase domain, these proteins contain a DNA-binding domain and a chromodomain that is able to directly modify chromatin structure, thereby affecting gene expression. CHD5 may also be involved in neural development and in the pathogenesis of neural tumors.
Synonyms:	CHD-5

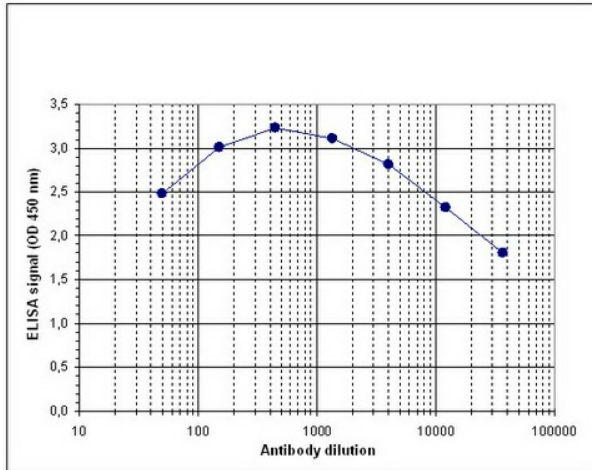


[View online »](#)

Product images:



WB. WB performed by Sonia Mulero, Spanish National Cancer Research Centre (CNIO), Madrid, Spain.



Determination of the titer To determine the titer, an ELISA was performed using a serial dilution of the antibody against human CHD5. The plates were coated with the peptides used for immunization of the rabbit. By plotting the absorbance against the antibody dilution (Figure 1), the titer of the antibody was estimated to be 1:93, 500.