

## Product datasheet for **TA347100**

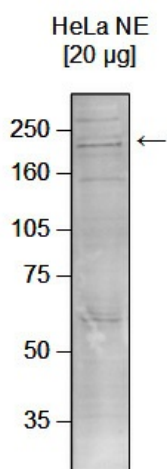
### CHD1 Rabbit Polyclonal Antibody

#### Product data:

Product Type:	Primary Antibodies
Applications:	WB
Recommended Dilution:	Western blotting (1:500)
Reactivity:	Human
Host:	Rabbit
Isotype:	IgG
Clonality:	Polyclonal
Immunogen:	The immunogen for anti-Chd1 antibody: human CHD1 (Chromodomain helicase DNA binding protein 1), using a GST fused recombinant protein.
Concentration:	lot specific
Purification:	Protein G purified polyclonal antibody in PBS containing 0.05% azide and 0.05% ProClin 300.
Conjugation:	Unconjugated
Storage:	Store at -20°C as received.
Stability:	Stable for 12 months from date of receipt.
Gene Name:	chromodomain helicase DNA binding protein 1
Database Link:	<a href="#">NP_001261</a> <a href="#">Entrez Gene 1105 Human</a> <a href="#">O14646</a>
Background:	CHD1 (UniProtKB/Swiss-Prot entry O14646) is an ATP-dependent chromatin remodeling factor, containing two tandem chromodomains. In human both chromodomains are essential for specific binding to histone H3, methylated at lysine 4. CHD1 belongs to the SNF2/RAD54 helicase family and contains also one helicase ATP-binding domain and one helicase C-terminal domain. It may play an important role in gene regulation.
Synonyms:	DKFZp686E2337
Protein Families:	Druggable Genome



[View online »](#)

**Product images:**

WB was performed on nuclear extracts from HeLa cells (HeLa NE, 20 ug) with the antibody against CHD1 diluted 1:500 in TBS-Tween containing 5% skimmed milk. The molecular weight marker (in kDa) is shown on the left; the location of the protein of interest is indicated on the right.