

## Product datasheet for **TA347096**

### HRPT2 (CDC73) Rabbit Polyclonal Antibody

#### Product data:

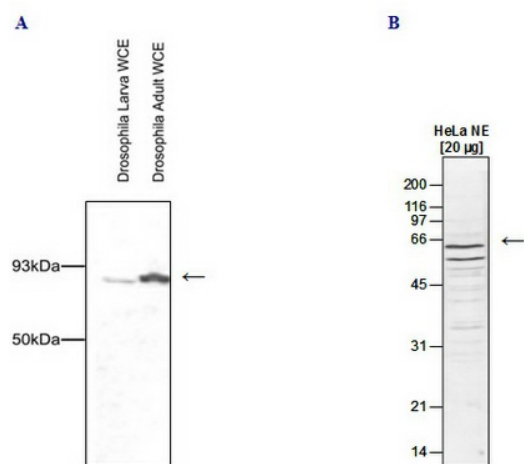
Product Type:	Primary Antibodies
Applications:	WB
Recommended Dilution:	ChIP (1 - 5 µg per ChIP); Western blotting (1:1,000); Immunofluorescence (12 µg per IP)
Reactivity:	Human, Drosophila
Host:	Rabbit
Isotype:	IgG
Clonality:	Polyclonal
Immunogen:	The immunogen for anti-Cdc73 antibody: drosophila Cdc73 (Cell division cycle protein 73), using the full length recombinant protein.
Concentration:	lot specific
Purification:	Protein G purified polyclonal antibody in PBS containing 0.05% azide and 0.05% ProClin 300.
Conjugation:	Unconjugated
Storage:	Store at -20°C as received.
Stability:	Stable for 12 months from date of receipt.
Gene Name:	cell division cycle 73
Database Link:	<a href="#">NP_078805</a> <a href="#">Entrez Gene 79577 Human</a> <a href="#">Q6P1J9</a>
Background:	Cdc73 (UniProtKB/Swiss-Prot entry Q6P1J9) is a tumor suppressor probably involved in transcriptional and post-transcriptional control pathways. Cdc73 is part of the PAF1 complex, a five-subunit protein complex composed of Paf1, Cdc73, Leo1, Rtf1 and Ctr9. PAF1 was first purified from yeast in association with RNA polymerase II and is believed to function in transcription elongation. The yeast PAF (yPAF) complex interacts with RNA polymerase II and coordinates the setting of histone marks associated with active transcription. In addition to coordinating events during transcription (initiation, promoter clearance, and elongation), hPAF also coordinates events in RNA quality control. Cdc73 may also be involved in cell cycle progression through the regulation of cyclin D1/PRAD1 expression.
Synonyms:	C1orf28; FIHP; HPTJT; HRPT1; HRPT2; HYX



[View online »](#)

Protein Families: Druggable Genome

### Product images:



WB was performed on whole cell extracts (WCE) from *drosophila* larva and *drosophila* adults (Figure 1A) or on nuclear extracts from HeLa cells (HeLa NE, 20 µg) (Figure 1B) using the antibody against dCdc73 diluted 1:1,000 in TBS-Tween containing 5% skimmed milk. A molecular weight marker (in kDa) is shown on the left; the location of the protein of interest is indicated on the right.