

## Product datasheet for **TA347094**

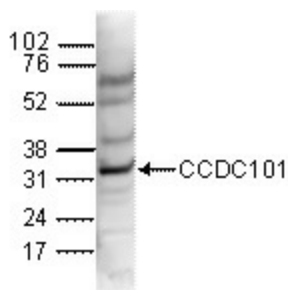
### SGF29 Rabbit Polyclonal Antibody

#### Product data:

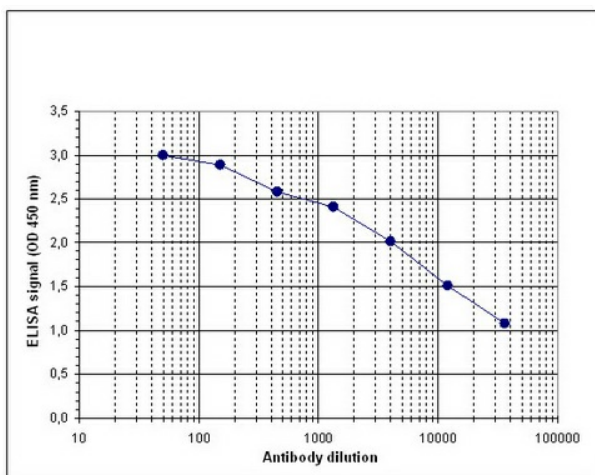
Product Type:	Primary Antibodies
Applications:	ELISA, WB
Recommended Dilution:	ELISA (1:100 ?? 1:200) ; Western blotting (1:1,000)
Reactivity:	Human
Host:	Rabbit
Isotype:	IgG
Clonality:	Polyclonal
Immunogen:	The immunogen for anti-CCDC101 antibody: human CCDC101 (coiled-coil domain containing 101), using two KLH-conjugated synthetic peptides containing a sequence from the central and from the C-terminal part of the protein, respectively.
Concentration:	lot specific
Purification:	Whole antiserum from rabbit containing 0.05% azide.
Conjugation:	Unconjugated
Storage:	Store at -20°C as received.
Stability:	Stable for 12 months from date of receipt.
Gene Name:	SAGA complex associated factor 29
Database Link:	<a href="#">NP_612423</a> <a href="#">Entrez Gene 112869 Human</a> <a href="#">Q96ES7</a>
Background:	CCDC101 (UniProt/Swiss-Prot entry Q96ES7) associates with the histone acetyl transferase complexes TFTC-HAT and STAGA and may therefore be involved in transcriptional regulation. It has been shown to activate c-Myc target gene expression and may play a role in c-Myc-mediated tumorigenesis.
Synonyms:	CCDC101; STAF36; TDRD29



[View online »](#)

**Product images:**


WB using the antibody against CCDC101 diluted 1:1,000 in TBS-Tween containing 5% skimmed milk. The position of the protein of interest (expected size: 33 kDa) is indicated on the right; the marker (in kDa) is shown on the left.



Determination of the titer To determine the titer, an ELISA was performed using a serial dilution of the antibody against human CCDC101. The plates were coated with the peptides used for immunization of the rabbit. By plotting the absorbance against the antibody dilution (Figure 1), the titer of the antibody was estimated to be 1:13,700.