

Product datasheet for **TA347093**

HP1 alpha (CBX5) Rabbit Polyclonal Antibody

Product data:

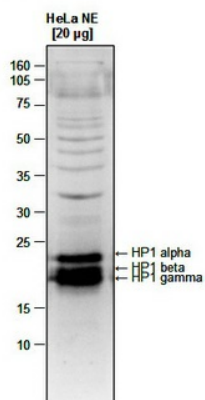
Product Type:	Primary Antibodies
Applications:	WB
Recommended Dilution:	Western blotting (1:1,000)
Reactivity:	Human
Host:	Rabbit
Isotype:	IgG
Clonality:	Polyclonal
Immunogen:	The immunogen for anti-HP1 alpha, beta and gamma antibody: human HP1 beta (Heterochromatin protein 1 homolog beta), using the full length recombinant GST tagged protein. The antibody also recognizes the alpha and gamma isoforms.
Concentration:	lot specific
Purification:	Whole antiserum from rabbit containing 0.05% azide.
Conjugation:	Unconjugated
Storage:	Store at -20°C as received.
Stability:	Stable for 12 months from date of receipt.
Gene Name:	chromobox 5
Database Link:	NP_036249 Entrez Gene 23468 Human P45973
Background:	HP1 alpha, beta and gamma (UniProtKB/Swiss-Prot entry P45973, P83916 and Q13185) are components of heterochromatin. They recognize and bind histone H3 tails methylated at 'Lys-9', leading to epigenetic repression. HP1 alpha, beta and gamma also interact with lamin B receptor (LBR) and can contribute to the association of the heterochromatin with the inner nuclear membrane.
Synonyms:	HEL25; HP1; HP1A



[View online »](#)

Product images:

Figure 1



WB was performed on nuclear extracts from HeLa cells (HeLa NE, 20 ug) using the antibody against HP1 alpha, beta and gamma diluted 1:1,000 in TBS-Tween containing 5% skimmed milk. A molecular weight marker (in kDa) is shown on the left. The location of the three HP1 isoforms is indicated on the right.