

Product datasheet for **TA347092**

HP1 alpha (CBX5) Rabbit Polyclonal Antibody

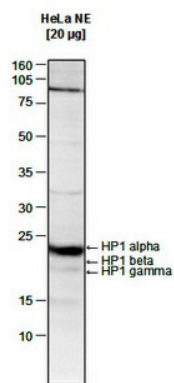
Product data:

Product Type:	Primary Antibodies
Applications:	WB
Recommended Dilution:	Western blotting (1:1,000)
Reactivity:	Human
Host:	Rabbit
Isotype:	IgG
Clonality:	Polyclonal
Immunogen:	The immunogen for anti-HP1 alpha antibody: human HP1 alpha (Heterochromatin protein 1 homolog alpha), using the full length recombinant GST tagged protein.
Concentration:	lot specific
Purification:	Whole antiserum from rabbit containing 0.05% azide.
Conjugation:	Unconjugated
Storage:	Store at -20°C as received.
Stability:	Stable for 12 months from date of receipt.
Gene Name:	chromobox 5
Database Link:	NP_036249 Entrez Gene 23468 Human P45973
Background:	HP1 alpha, beta and gamma (UniProtKB/Swiss-Prot entry P45973) is a component of heterochromatin. It recognizes and binds histone H3 tails methylated at 'Lys-9', leading to epigenetic repression. HP1 alpha also interacts with lamin B receptor (LBR) and can contribute to the association of the heterochromatin with the inner nuclear membrane. Further, HP1 alpha is involved in the formation of a functional kinetochore through interaction with MIS12 complex proteins.
Synonyms:	HEL25; HP1; HP1A


[View online »](#)

Product images:

Figure 1



WB was performed on nuclear extracts from HeLa cells (HeLa NE, 20 ug) using the antibody against hHP1 alpha diluted 1:1,000 in TBS-Tween containing 5% skimmed milk. A molecular weight marker (in kDa) is shown on the left. The location of the three HP1 isoforms of interest is indicated on the right, demonstrating that the antibody only recognizes the alpha isoform.