

Product datasheet for **TA347090**

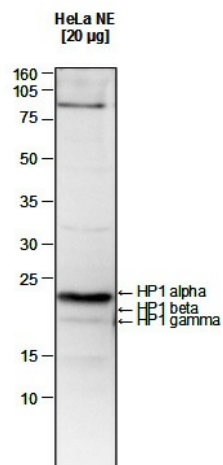
HP1 alpha (CBX5) Rabbit Polyclonal Antibody

Product data:

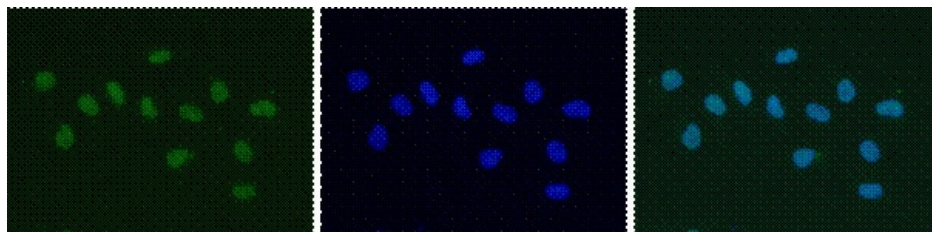
Product Type:	Primary Antibodies
Applications:	IF, WB
Recommended Dilution:	Western blotting (1:1,000); IF: (1:500)
Reactivity:	Human
Host:	Rabbit
Isotype:	IgG
Clonality:	Polyclonal
Immunogen:	The immunogen for anti-HP1. antibody: human HP1. (Heterochromatin protein 1 homolog alpha), using the full length recombinant GST tagged protein.
Concentration:	lot specific
Purification:	Protein G purified polyclonal antibody in PBS containing 0.05% azide and 0.05% ProClin 300.
Conjugation:	Unconjugated
Storage:	Store at -20°C as received.
Stability:	Stable for 12 months from date of receipt.
Gene Name:	chromobox 5
Database Link:	NP_036249 Entrez Gene 23468 Human P45973
Background:	HP1 alpha (UniProt/Swiss-Prot entry P45973) is a component of heterochromatin. It recognizes and binds to histone H3 tails methylated at 'Lys-9', leading to epigenetic repression of transcription. HP1 alpha may also interact with lamin B receptor (LBR), thereby contributing to the association of the heterochromatin with the inner nuclear membrane. Further, HP1 alpha is involved in the formation of a functional kinetochore through interaction with MIS12 complex proteins.
Synonyms:	HEL25; HP1; HP1A



[View online »](#)

Product images:


WB was performed on nuclear extracts from HeLa cells (20 ug) with the antibody against human HP1a, diluted 1:1,000 in TBS-Tween containing 5% skimmed milk (Figure 1). The molecular weight marker (in kDa) is shown on the left; the expected location of HP1a, HP1 β and HP1 γ is indicated on the right. The WB analysis clearly demonstrates that the HP1a antibody specifically recognizes HP1a and not HP1 β and HP1 γ .



HeLa cells were stained with the antibody against HP1a and with DAPI. Cells were fixed with 4% formaldehyde for 10' and blocked with PBS/TX-100 containing 5% normal goat serum and 1% BSA. The cells were immunofluorescently labelled with the HP1a antibody (left) diluted 1:500 in blocking solution followed by an anti-rabbit antibody conjugated to Alexa488. The middle panel shows staining of the nuclei with DAPI. A merge of the two stainings is shown on the right.