

## Product datasheet for **TA347083**

### **BCL7C Rabbit Polyclonal Antibody**

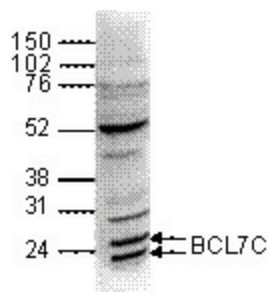
#### **Product data:**

Product Type:	Primary Antibodies
Applications:	ELISA, WB
Recommended Dilution:	ELISA (1:100 ?? 1:1,000); Western blotting (1:1,000)
Reactivity:	Human
Host:	Rabbit
Isotype:	IgG
Clonality:	Polyclonal
Immunogen:	The immunogen for anti-BCL7C antibody: human BCL7C (B-cell CLL/lymphoma 7C), using two KLH-conjugated synthetic peptides containing a sequence from the central and from the C-terminal part of the protein, respectively.
Concentration:	lot specific
Purification:	Whole antiserum from rabbit containing 0.05% azide.
Conjugation:	Unconjugated
Storage:	Store at -20°C as received.
Stability:	Stable for 12 months from date of receipt.
Gene Name:	B-cell CLL/lymphoma 7C
Database Link:	<a href="#">NP_004756</a> <a href="#">Entrez Gene 9274 Human</a> <a href="#">Q8WUZ0</a>
Background:	BCL7C (UniProt/Swiss-Prot entry Q8WUZ0) is homologous to the N-terminal region of BCL7A which was shown to be directly involved in a three-way gene translocation in a Burkitt lymphoma cell line. The function of BCL7A has not yet been elucidated, but it may play an anti-apoptotic role.
Synonyms:	B-cell CLL; lymphoma 7C

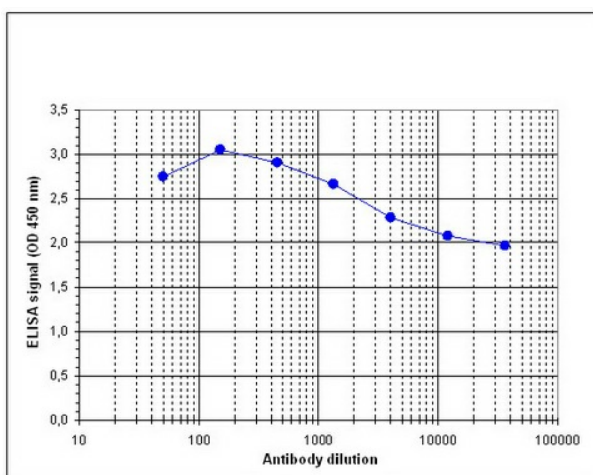


[View online »](#)

## Product images:



WB using the antibody against BCL7C diluted 1:1,000 in TBS-Tween containing 5% skimmed milk. The position of the protein of interest is indicated on the right; the marker (in kDa) is shown on the left. The antibody detects both known isoforms of the protein (expected sizes: 23.4 and 26.4 kDa).



Determination of the titer To determine the titer, an ELISA was performed using a serial dilution of the antibody against human BCL7C. The plates were coated with the peptides used for immunization of the rabbit. By plotting the absorbance against the antibody dilution (Figure 1), the titer of the antibody was estimated to be 1:209,000.