

Product datasheet for **TA347081**

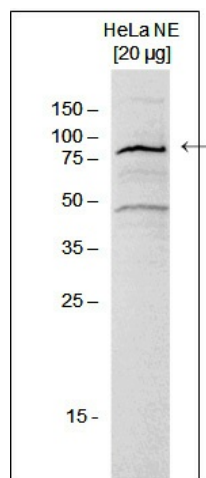
ASH2L Rabbit Polyclonal Antibody

Product data:

Product Type:	Primary Antibodies
Applications:	WB
Recommended Dilution:	Western blotting (1:1,000)
Reactivity:	Human
Host:	Rabbit
Isotype:	IgG
Clonality:	Polyclonal
Immunogen:	The immunogen for anti-ASH2 antibody: human Ash2 (absent, small, or homeotic 2), using a recombinant protein.
Concentration:	lot specific
Purification:	Protein G purified polyclonal antibody in PBS containing 0.05% azide and 0.05% ProClin 300.
Conjugation:	Unconjugated
Storage:	Store at -20°C as received.
Stability:	Stable for 12 months from date of receipt.
Gene Name:	ASH2 like histone lysine methyltransferase complex subunit
Database Link:	NP_004665 Entrez Gene 9070 Human Q9UBL3
Background:	ASH2 (UniProtKB/Swiss-Prot entry Q9UBL3) is a component of the SET1/ASH2 histone methyltransferase (HMT) complex. This complex specifically methylates K4 of histone H3, thereby activating transcription. Methylation of K4 is blocked by premethylation of the neighboring K9, a repressor of transcription. This indicates that the SET1/ASH2 HMT complex mediates the crosstalk between K9 methylation and K4 methylation. ASH2 plays a role in hematopoiesis and may be associated with some kinds of leukemia.
Synonyms:	ASH2; ASH2L1; ASH2L2; Bre2
Protein Families:	Druggable Genome, Transcription Factors



[View online »](#)

Product images:

WB was performed on HeLa nuclear extract (HeLa NE, 20 ug) using the antibody against ASH2 diluted 1:1,000 in TBS-Tween containing 5% skimmed milk. The molecular weight marker (in kDa) is shown on the left; the location of the protein of interest is indicated on the right.