

Product datasheet for **TA347080**

ASH2L Rabbit Polyclonal Antibody

Product data:

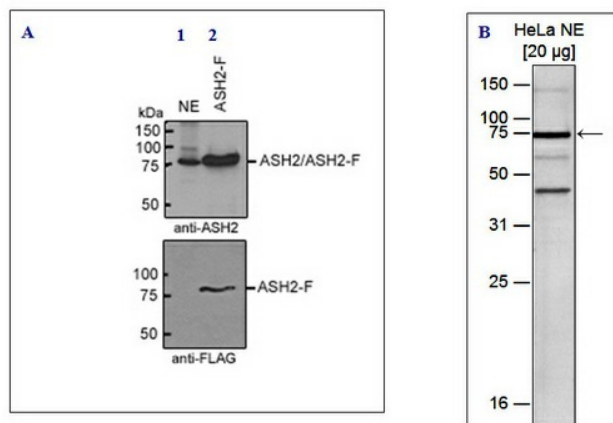
Product Type:	Primary Antibodies
Applications:	WB
Recommended Dilution:	Western blotting (1:1,000)
Reactivity:	Human
Host:	Rabbit
Isotype:	IgG
Clonality:	Polyclonal
Immunogen:	The immunogen for anti-ASH2 antibody: human Ash2 (absent, small, or homeotic 2), using a recombinant protein.
Concentration:	lot specific
Purification:	Whole antiserum from rabbit containing 0.05% azide.
Conjugation:	Unconjugated
Storage:	Store at -20°C as received.
Stability:	Stable for 12 months from date of receipt.
Gene Name:	ASH2 like histone lysine methyltransferase complex subunit
Database Link:	NP_004665 Entrez Gene 9070 Human Q9UBL3
Background:	ASH2 (UniProtKB/Swiss-Prot entry Q9UBL3) is a component of the SET1/ASH2 histone methyltransferase (HMT) complex. This complex specifically methylates K4 of histone H3, thereby activating transcription. Methylation of K4 is blocked by premethylation of the neighboring K9, a repressor of transcription. This indicates that the SET1/ASH2 HMT complex mediates the crosstalk between K9 methylation and K4 methylation. ASH2 plays a role in hematopoiesis and may be associated with some kinds of leukemia.
Synonyms:	ASH2; ASH2L1; ASH2L2; Bre2
Protein Families:	Druggable Genome, Transcription Factors



[View online »](#)

Product images:

Figure 1



WB was performed using the hASH2 ab at 1:1,000 in TBS-Tween with 5% skimmed milk on nuclear extracts from HeLa cells (upper panel: lane 1) and ectopically expressed FLAG-tagged ASH2 (ASH2-F, upper panel: lane 2). The lower panel shows the same WB was performed using nuclear extracts from HeLa (HeLa NE, 20 ug) with the ASH2 ab at 1:1,000 in TBS-Tween with 5% skimmed milk. The molecular weight marker (in kDa) is shown on the left; the location of the protein of interest is indicated on the right.