

Product datasheet for **TA347076**

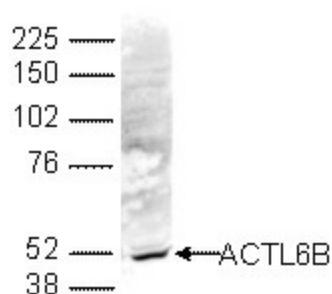
BAF53b (ACTL6B) Rabbit Polyclonal Antibody

Product data:

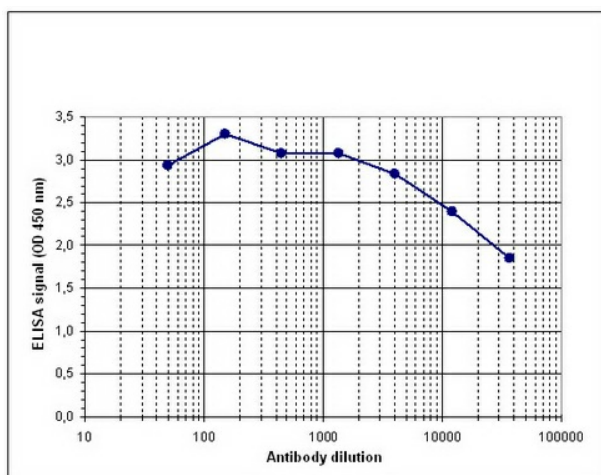
Product Type:	Primary Antibodies
Applications:	ELISA, WB
Recommended Dilution:	ELISA (1:500 ?? 1:1,000) ; Western blotting (1:1,000)
Reactivity:	Human
Host:	Rabbit
Isotype:	IgG
Clonality:	Polyclonal
Immunogen:	The immunogen for anti-ACTL6B antibody: human ACTL6B (actin-like 6B), using a KLH-conjugated synthetic peptide containing a sequence from the central part of the protein.
Concentration:	lot specific
Purification:	Whole antiserum from rabbit containing 0.05% azide.
Conjugation:	Unconjugated
Storage:	Store at -20°C as received.
Stability:	Stable for 12 months from date of receipt.
Gene Name:	actin like 6B
Database Link:	NP_057272 Entrez Gene 51412 Human O94805
Background:	ACTL6B (UniProt/Swiss-Prot entry O94805) belongs to the family of actin-related proteins (ARPs) which are involved in diverse cellular processes such as vesicular transport, spindle orientation, nuclear migration and chromatin remodeling. ACTL6B is a subunit of the BAF (BRG1/brm-associated factor) complex in mammals, which is thought to antagonize chromatin-mediated transcriptional repression thereby facilitating transcriptional activation of specific genes. Further, ACTL6B may be involved in gene regulation by structural modulation of their chromatin, specifically in the brain.
Synonyms:	ACTL6; BAF53B
Protein Families:	Druggable Genome


[View online »](#)

Product images:



WB using the antibody against ACTL6B diluted 1:1,000 in TBS-Tween containing 5% skimmed milk. The position of the protein of interest (expected size: 47 kDa) is indicated on the right; the marker (in kDa) is shown on the left.



Determination of the titer To determine the titer, an ELISA was performed using a serial dilution of the antibody against ACTL6B. The plates were coated with the peptide used for immunization of the rabbit. By plotting the absorbance against the antibody dilution (Figure 1), the titer of the antibody was estimated to be 1:76,000.