

## Product datasheet for **TA347056**

### Sox2 Mouse Monoclonal Antibody [Clone ID: 2A10-F11-F12]

#### Product data:

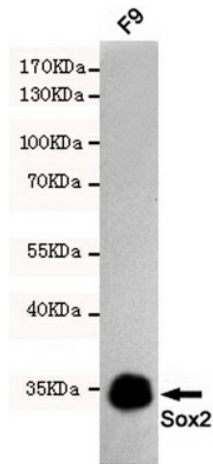
Product Type:	Primary Antibodies
Clone Name:	2A10-F11-F12
Applications:	FC, IF, WB
Recommended Dilution:	WB: 1:1000, IF: 1:150
Reactivity:	Mouse
Host:	Mouse
Isotype:	IgG1
Clonality:	Monoclonal
Immunogen:	The immunogen for Sox2 antibody: purified recombinant mouse Sox2 protein fragments expressed in E.coli
Formulation:	Purified mouse monoclonal in buffer containing 0.1M Tris-Glycine (pH 7.4, 150 mM NaCl) with 0.02% sodium azide, 50% glycerol
Purification:	Affinity purified
Conjugation:	Unconjugated
Storage:	Store at -20°C as received.
Stability:	Stable for 12 months from date of receipt.
Predicted Protein Size:	35 kDa
Gene Name:	SRY (sex determining region Y)-box 2
Database Link:	<a href="#">NP_035573</a> <a href="#">Entrez Gene 20674 Mouse</a> <a href="#">P48432</a>
Background:	Transcription factor that forms a trimeric complex with OCT4 on DNA and controls the expression of a number of genes involved in embryonic development such as YES1,FGF4,UTF1 and ZFP206 by similarity.Critical for early embryogenesis and for embryonic stem cell pluripotency.May function as a switch in neuronal development.Downstream SRRT target that mediates the promotion of neural stem cell self-renewal by similarity.Keeps neural cells undifferentiated by counteracting the activity of proneural proteins and suppresses neuronal differentiation by similarity.



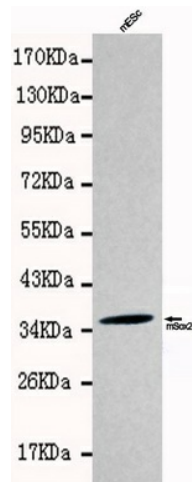
[View online »](#)

Synonyms: ANOP3; MCOPS3; MGC2413

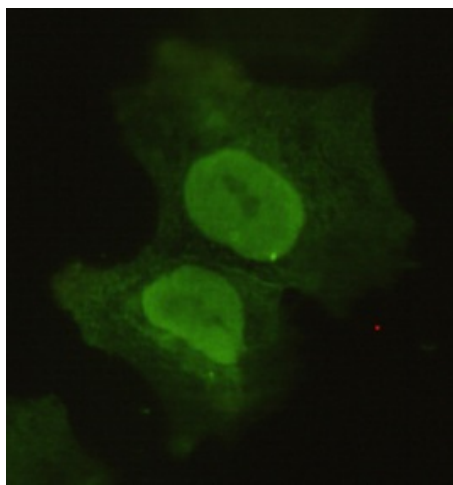
**Product images:**



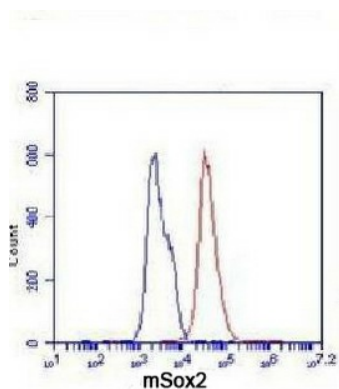
Western blot detection of Sox2 in F9 cell lysates using Sox2 mouse mAb (1:1000 diluted). Predicted band size:35KDa. Observed band size:35KDa.



Western blot detection of Sox2 in mES cell lysates using Sox2 antibody (1:1000 diluted). Predicted band size:35KDa, Observed band size:35KDa.



Immunocytochemistry of COS7 cells using anti-Sox2 mouse mAb diluted 1:150.



Flow Cytometry analysis of F9 cells stained with Sox2 (red, 1/100 dilution), followed by FITC-conjugated goat anti-mouse IgG. Blue line histogram represents the isotype control, normal mouse IgG.